



**FITNESS  
ACCESSORIES**



EVERLAST®  
F.I.T.

# FITNESS ACCESSORIES



\*each weight 1.5 lbs (3 lbs total)



\*each weight 3 lbs (6 lbs total)

## WRIST WEIGHTS

Fully adjustable.  
Perfect for toning and aerobic exercises  
A contoured and velcro strapped design to provide a custom fit for your ankles and/or wrists.  
Balanced weight for better balance.  
Durable construction.

-----  
**SKU:** EVWW3W003 **Color:** Purple **1.5LB PAIR**  
**SKU:** EVWW3W006 **Color:** Blue **3LB PAIR**



\*each weight 1 lbs (2 lbs total)



\*each weight 2.5 lbs (5 lbs total)

## PREMIUM ANKLE/WRIST WEIGHTS

Fully adjustable.  
Burn more calories during activity with F.I.T. 5 & 2 lbs Comfort Weights.  
An adjustable, contoured design provides a custom F.I.T. for your ankles and/or wrists.  
A soft terry cloth interior absorbs moisture and is completely non-abrasive.  
**Includes two weights:** each weight is 2.5 lbs (5 lbs weights) or 1 pound (2 lbs weights).

-----  
**SKU:** P00000741 **Color:** Purple **2LB PAIR**  
**SKU:** P00000742 **Color:** Blue **5LB PAIR**







# FITNESS ACCESSORIES



## ANKLE WEIGHTS

Fully adjustable.  
Burn more calories.  
Comfort weights for your ankles.  
Adjustable, contoured design provides a custom fit.

---

SKU: EVWW0W016	Color: Black / Red	8lbs	<b>16LB PAIR</b>
SKU: EVWW0W020	Color: Black	10lbs	<b>20LB PAIR</b>



1 LB

2.5 LB

5 LB

## ANKLE/WRIST WEIGHTS

Precision weighted and balanced.  
Durable construction.  
Comfortable neoprene coating.  
Perfect for aerobics and toning.

---

SKU: EVWW610	Color: Purple	2lbs / 1lb each	<b>2LB PAIR</b>
SKU: EVWW625	Color: Blue	5lbs / 2.5lb each	<b>5LB PAIR</b>
SKU: EVWW650	Color: Black	10lbs / 5lb each	<b>10LB PAIR</b>



# FITNESS ACCESSORIES



## HAND WEIGHT ERGONOMIC

This hand shaped design, allows you to grip the weight slightly without having to over squeeze. Great for any kind of workout that use light weighted weights, walking, jogging and aerobics. Increase the effectiveness of your workout with this pair of everlast 6lb / 10lb. Cardio weights.

SKU: EVWD1W130 COLOR: Purple **3LB**

SKU: EVWD1W250 COLOR: Dark Grey **5LB**



## WALKING WEIGHTS

Includes a pair of step weights.  
Comfortable and ergonomic 2lb / 4lb weights Fit comfortably in your palm.  
Durable enough to use for your everyday workouts.  
Improve cardio endurance, develop your Muscles and tone your entire body.  
Durable enough for your everyday workouts.  
Neoprene material is great for indoor and outdoor use.  
Soft grip makes them comfortable to hold for light cardio exercises.  
Compact and convenient to take when you travel.

SKU: EVWW4W20 Color: Red

SKU: EVWW4W40 Color: Grey

**2LB  
PAIR  
4LB  
PAIR**





## VINYL COATED DUMBBELLS

Precision Weighted And Balanced, Durable Construction.  
Vinyl Coating For Added Comfort And Protection.  
Perfect For Aerobics And Toning.

- 
- SKU: EVDD02 - 2LB COLOR: Pink**
  - SKU: EVDD03 - 3LB COLOR: Violet**
  - SKU: EVDD04 - 4LB COLOR: Orange**
  - SKU: EVDD05 - 5LB COLOR: Red**
  - SKU: EVDD06 - 6LB COLOR: Purple**
  - SKU: EVDD07 - 7LB COLOR: Yellow**
  - SKU: EVDD08 - 8LB COLOR: Blue**
  - SKU: EVDD09 - 9LB COLOR: Green**
  - SKU: EVDD10 - 10LB COLOR: Charcoal**
  - SKU: EVDD12 - 12LB COLOR: Royal**
  - SKU: EVDD15 - 15LB COLOR: Black**

# FITNESS ACCESSORIES



## WEIGHTED FITNESS BAR

### VERSATILE WORKOUT BAR

Our exclusive fitness equipment bar is designed to add strength, balance, and flexibility to your workouts, improving effectiveness during circuit and interval classes, kickboxing and martial.



### WORKS GREAT FOR

- Gaining Range Of Motion
- Physical Rehabilitation
- Increasing Mobility
- Toning Muscles
- Burning Fat

### SOLID STEEL CORE

Single piece construction

### HIGH DENSITY PADDED FOAM SURFACE

Durable increased comfort and decreased slipping.



### ANTI ROLL PLASTIC EN CAP



### STURDY, RESILIENT CONSTRUCTION

Our durable exercise bar is designed with a one-piece, heavy-duty steel core, to prevent any breaking or bending, and rubber pads with a high-density interior for long-lasting use, taking pressure off hands.

Shape up and gain muscle definition. Perfect for many styles of fitness classes as well as any aerobics studio class. Add weight to standard bodyweight Exercises such as lunges and squats.



**5 KG** SKU: EVFB1W500  
COLOR: Black / Grey



# FITNESS ACCESSORIES



## SAUNA SUIT

MAXIMIZE CALORIE BURN AND DETOXYFY BODY WITH INCREASED PERSPIRATION

Excellent for aerobic conditioning.

Keeps muscles warm and helps to shed excess water.

Full cut for comfortable fit during activity.

Two piece outfit with elastic waist, cuffs, and ankles.

Made with heavy duty pvc fabric.

---

**SKU:** EVSS1S27 **COLOR:** Black **L XL XXL**

**SKU:** P00002713 **COLOR:** Black **XL - XXL**

**SKU:** P00002712 **COLOR:** Black **L - XL**



## HOODED SAUNA SUIT

SHED WATER WEIGHT, TRAP HEAT, WARM UP MUSCLES

Designed to trap body heat and keep muscles loose.

Allowing you to shed excess water weight and calories.

More efficiently prior to or during a workout.

---

**SKU:** EVSH5S57 **COLOR:** Grey **L / XL - XL / XXL**





EVERLAST



# FITNESS ACCESSORIES



## ADJUSTABLE WEIGHT VEST

### REFLECTIVE TAPE

A wide reflective tape on the back of the weight vest makes night exercising much safer.

### ERGONOMIC DESIGN

Balanced weight is distributed throughout your body, including adjustable straps to prevent slipping during exercise.

### EQUAL WEIGHT DISTRIBUTION

Balanced weight distribution and with pockets on the front and back of the vest, this weight vest can provide you with maximum comfort during all exercises without straining your back or shoulders.

---

SKU: EVAVOW020 Color: Camo

# 20KG

**ENGINEERED FOR:**

STRENGTH & SPORT SPECIFIC TRAINING  
TOTAL BODY & CARDIO CONDITIONING







# FITNESS ACCESSORIES



**20LB**



**10LB**



## WEIGHTED TRAINING VESTS

MADE WITH SOFT NEOPRENE MATERIAL FOR ULTIMATE COMFORT & DURABILITY. IDEAL FOR STRENGTH AND WEIGHT TRAINING, WEIGHT LOSS AND IMPROVING BONE DENSITY. ONE SIZE FITS MOST BODY TYPES.



### REFLECTIVE TAPES

There are multi reflective tapes on both sides of the weight vest which make the night running much safer.

### NEOPRENE MATERIAL

Made with soft breathable neoprene fabric with quality sand filling, which is super soft and helps to concentrate the weight in the chest and upper body during training and builds core muscle strenght.

### EVENLY DISTRIBUTED WEIGHTS

Extra resistance evenly to body weights, it will not slip and slide during any activities.

### CONVENIENT STORAGE POCKET

Mesh pocket to store belongings on the back of the weight best when running or walking.

SKU: EVWV0W610 COLOR: Grey 10Lbs

SKU: EVWV0W620 COLOR: Black 20Lbs

# FITNESS ACCESSORIES



## 8lb WALKING FITNESS VEST

FOR MORE INTENSE WORKOUTS

Use For Walking And Sport Training

For More Intese Workouts

Improve Cardio And Strength, Speed And Agility

Comfortable Form-fitting Design

Reflective Stripes

FEATURING  
**EVERCOOL™**  
TECHNOLOGY

---

**SKU:** EVFV1S08 8Lbs **COLOR:** Yellow





# FITNESS ACCESSORIES



75  
cm



## ANTI-BURST GYM BALL

Ideal for yoga, pilates, strength training, core training, stretching, toning and resistance exercises.

### Product features

Helps improve balance, coordination and flexibility.

Ideal for core strength training, stretching, toning, resistance exercises.

Safe, durable and easy to use. Includes hand pump.

Use to strengthen and tone your hips, back, legs, and shoulders without additional stress on the spine or hips.

SKU: EYB3W255 COLOR: Purple 55cm

SKU: EYB3W065 COLOR: Grey 65cm

SKU: EYB3W175 COLOR: Blue 75cm



65  
cm



55  
cm



INCLUDES  
DOUBLE ACTION INFLATING PUMP.

## SUPERIOR BALL

Deal for yoga exercises, pilates, basic training, stretching, toning and resistance.

Used to strengthen and tone your abdomen, hips, back and shoulders without stress.

Helps improve balance, coordination and flexibility.

Non-slip design, durable, easy to use and safe.

Includes manual pump to inflate.

100% pvc.

SKU: EYB3W006 COLOR: Black



INCLUDES  
DOUBLE ACTION INFLATING PUMP.

# FITNESS ACCESSORIES



## FITNESS BALL

STRENGTH, FLEXIBILITY, FOR AEROBICS, YOGA OR PILATES  
Ideal for core workouts.  
Ideal for all fitness levels.  
Easy grip soft vinyl exterior.  
Develop strength and flexibility.  
Shape and tone.



-----  
**SKU:** EVFB1S05 **COLOR:** Pink 5lb  
**SKU:** EVFB1S08 **COLOR:** Grey 8lb



## MINI GYM BALL

CONVENIENT - These exercise balls for working out are quick to inflate/deflate for easy use.  
ANTI-SLIP - The surface of each fitness ball is coated in a non-slip glaze to ensure you have a proper and safe grip when working out.  
RECOMMENDED BY TRAINERS AND PHYSICAL THERAPISTS - A mini ball is a perfect tool to increase balance, core fitness, tone the inner thighs, and increase flexibility.  
STRENGTHEN YOUR CORE Strengthens key muscles in the abdomen, which improves endurance, posture and balance.

-----  
**SKU:** EVPB2W130 **COLOR:** Grey

**25**  
**cm**  
DIAMETER

# FITNESS ACCESSORIES



## HALF BALANCE BALL

Half ball for balance or yoga.  
Non-slip to train at home or open spaces.  
With side straps for basic arm and shoulder exercises  
Diameter: 60 cm

SKU: EVBB2B103 COLOR: Black

60  
cm  
DIAMETER



INCLUDES  
2  
RESISTANCE  
BANDS



## BALANCE DISC

IMPROVES BALANCE, COORDINATION, AND OVERALL BODY SHAPE STRENGTHENS CORE MUSCLES, ANKLES, KNEES, AND HIPS.

Ideal for developing balance and stabilization.

Can be inflated or deflated to change the level of difficulty.

Great for strengthening exercises, the disc requires you to engage multiple core muscles at once to maintain balance.

Dual-textured surface ensures a non-slip grip, with raised massaging bumps on one side and smoother bumps on the other.

SKU: EVBC6B005 COLOR: Grey

33cm  
13"  
DIAMETER





# AB WHEEL



## AB WHEEL

Perfect for toning abs and strengthen your arms.  
Contoured foam handles.  
Non-slip wheels that allow comfort and stability.

-----  
**SKU:** EVSW3W447 **COLOR:** Black



## AB WHEEL

GREAT TOOL TO TONE AND DEFINE AB AND BACK MUSCLES  
The everlast ab wheel works both the upper and lower abdominal muscles, as well as the oblique and supporting muscles. You will also strengthen your back, glute and arm muscles.

-----  
**SKU:** EVSW4I47 **COLOR:** Green / Black

FEATURING  
**POWERCORE™**  
TECHNOLOGY



## AB WHEEL

CORE WHEELS FOR DYNAMIC CORE EXERCISES  
Enhance traditional plank and push-up exercises.  
Develop pillar strength (shoulders, torso and hips) through a variety of exercises.  
5 spoke inner wheel design for even weight distribution.  
Ergonomic sure-grip rubberized handles.  
Dual textured treads offer great traction & control.

-----  
**SKU:** EVWH9W400 **COLOR:** Red / Black

FEATURING  
**POWERCORE™**  
TECHNOLOGY



# FITNESS ACCESSORIES



## FULL SET EXPANDER SET

5 COLOR-CODED RESISTANCE BANDS INCLUDED

PINK (5 LBS), PURPLE (10 LBS), ORANGE (15 LBS), GREEN (20 LBS), LT. BLUE (25 LBS).

Each resistance band is color-coded for instant recognizability.

It can be used alone or stacked in any combination to a maximum equivalent of 75 lbs.

Easily creating over 30 different resistance levels by attaching 1.2.3.4. Or all 5 bands to the handle.

<b>PINK</b> 5 LB / 2.3KG	<b>PURPLE</b> 10 LB / 4.5KG	<b>ORANGE</b> 15 LB / 6.8KG	<b>GREEN</b> 20 LB / 9.1KG	<b>LT. BLUE</b> 25 LB / 11.3KG
-----------------------------	--------------------------------	--------------------------------	-------------------------------	-----------------------------------

This complete resistance kit allows for a full body work-out without Heavy and expensive equipment.

Add or subtract bands to create the ideal weight for every exercise.

This stackable set of resistance bands can produce up to 105 lb / 48kg.

Features a metal clipping system on bands for attachment to soft-grip handles or ankle straps.

**5**  
RESISTANCE  
LEVELS

INCLUDES:

- 5 X NATURAL LATEX TUBES
- 2 X FOAM-HANDLES
- 2 X ANKLE / WRIST STRAPS
- 1 X DOOR ANCHOR
- 1 X CARRY BAG

SKU: EVLB9W510



## 3 TUBE TONING SET

Fitness tubes offer one of the most convenient And versatile workouts available.

Ideal for toning and strengthening your upper body, they are a perfect complement to any cardio workout such as walking.

SKU: EVTS9W830 COLOR: Blue / Green / Orange



### FITNESS TONING EXPANDER

IMPROVE YOUR BALANCE, COORDINATION, FLEXIBILITY, AND ENDURANCE HELPS DEVELOP CORE STRENGTH.

EXERCISE SEVERAL MUSCLE GROUPS AT ONCE.

CUSHIONED FOAM HANDLES PROVIDE COMFORTABLE AND SLIP-FREE GRIP

### TONER RESISTANCE LOOP

SHAPE YOUR LEGS AND IMPROVE OVERALL LOWER-BODY MUSCLE TONE .

GREAT FOR TONING HIPS AND STRENGTHENING CALVES AND BUNS.

CUSHIONED FOAM HANDLES PROVIDE COMFORTABLE AND SLIP-FREE GRIP

### FITNESS EXPANDER

STRENGTHENS ARMS, CHEST, SHOULDERS, BACK, LEGS, AND BUNS

CUSHIONED FOAM HANDLES PROVIDE COMFORTABLE AND SLIP-FREE GRIP

VERY PORTABLE-USE ANYWHERE/ANYTIME













# FITNESS ACCESSORIES



## INTERCHANGEABLE RESISTANCE TUBE

---

<b>SKU:</b> EVLT9W005	LATEX TUBE	<b>5LB</b>	Neon Pink	
<b>SKU:</b> EVLT9W010	LATEX TUBE	<b>10LB</b>	Purple	
<b>SKU:</b> EVLT9W015	LATEX TUBE	<b>15LB</b>	Orange	
<b>SKU:</b> EVLT9W020	LATEX TUBE	<b>20LB</b>	Lime	
<b>SKU:</b> EVLT9W025	LATEX TUBE	<b>25LB</b>	Light Blue	
<b>SKU:</b> EVLT9W035	LATEX TUBE	<b>35LB</b>	Red	
<b>SKU:</b> EVLT9W045	LATEX TUBE	<b>45LB</b>	Royal Blue	
<b>SKU:</b> EVLT9W055	LATEX TUBE	<b>55LB</b>	Black	



## FOAM HANDLES FOR INDIVIDUAL TUBES

One size fits all.  
 Wide design to accommodate all hand sizes.  
 Soft foam padded and durable grip.

---

**SKU:** EVFH9W600 **COLOR:** Black



# FITNESS ACCESSORIES



## TRIPLE RESISTANCE TUBE

THREE DIFFERENT RESISTANCE LEVELS, TONES ABS, ARMS CHEST SHOULDERS AND BACK  
 Incorporates resistance training into workout routines  
 Anti-sweat, high-density foam handles  
 Tone muscles, burn calories  
 3 different resistance levels light, medium and heavy  
 This resistance bands set is light and compact enough  
 To travel with you anywhere  
 Supports some of the latest workout routines

-  LIGHT RESISTANCE
-  MEDIUM RESISTANCE
-  HEAVY RESISTANCE

**SKU:** EVRT049 **COLOR:** Black / Yellow / Blue



## RESISTANCE EXERCISE TUBE

TONES ABS, ARMS, CHEST, SHOULDERS AND BACK  
 Resistant tube provides a complete workout.  
 Compact and lightweight design for versatile use,  
 even when traveling.  
 Door strap for additional exercise options.

**SKU:** EVRT711-BL **COLOR:** Blue  
**SKU:** EVRT711-PK **COLOR:** Pink



## LOWER BODY POWER BANDS

ENGINEERED FOR: LATERAL RESISTANCE, LOWER BODY STRENGTH TRAINING, IMPROVING FOOTWORK  
 Two padded hook-and-loop ankle straps provide comfort and stability during training.  
 Removable gray elastic band designed to discipline footwork and athletic stance provides resistance up to 25 lbs  
 Removable red elastic band, designed to strengthen knee strikes and kicks, provides resistance up to 15 lbs.

**SKU:** 6350RG **COLOR:** Black





**ENGINEERED FOR: LATERAL RESISTANCE,  
LOWER BODY STRENGTH TRAINING,  
IMPROVING FOOTWORK**



# FITNESS ACCESSORIES



## F.I.T. STRETCH STRAP

Developed by physical therapists, the F.I.T. Stretch Strap enhances your stretch routine to improve flexibility, recovery, and overall fitness level. Lightweight and portable, with multiple grip positions for both static and dynamic stretches. Ideal for pre- and post-workout stretching.

SKU: P00000809 COLOR: Charcoal



## F.I.T. SHADOW BOXER

The F.I.T. Shadow Boxer is designed to help develop speed, power, and explosiveness for boxing, MMA, and all fight sports. Designed with foam-covered back support and handles for safety and comfort, and double-resistance tubes to help increase strength in arms and shoulders.

SKU: P00000789 COLOR: Black / Blue



## F.I.T. RESISTANCE PUSH-UP

Add more intensity to your push-up with the f.i.t. resistance push-up. highly compact and portable, built with high-quality resistance tubes, hand grips, and back pad for comfort and durability.

Equipped with 3 different resistance levels for the ultimate full-body workout.

Padded handles and back support for comfort and safety. two levels of resistance for increased or decreased strength workouts.

SKU: P00000813 COLOR: Black



# BANDS



- **MINI POWER BAND** offers 5lbs - 35lbs  
Resistance length - 102cm width - 12mm  
**SKU:** EVPB4R012 **COLOR:** Red
- **XSMALL POWER BAND** offers 10lbs - 50lbs  
Resistance length - 102cm width - 22mm  
**SKU:** EVPB4R022 **COLOR:** Purple
- **SMALL POWER BAND** offers 25lbs - 80lbs  
Resistance length - 102cm width - 32mm  
**SKU:** EVPB4R032 **COLOR:** Orange
- **MEDIUM POWER BAND** offers 50lbs - 120lbs  
Resistance length - 102cm width - 44mm  
**SKU:** EVPB4R044 **COLOR:** Blue
- **LARGE POWER BAND** offers 60lbs - 150lbs  
Resistance length - 102cm width - 65mm  
**SKU:** EVPB4R065 **COLOR:** Black



## POWERBAND

Thick, extra strong and ideal for heavy use. Designed to work lower leg muscles, provide resistance for walks, shuffles and lunges and help to prevent and rehabilitate sprained ankles. Perfect for power assisted pull-ups/chin-ups, as well as in all fitness activities to provide added resistance to your workout.



# BANDS

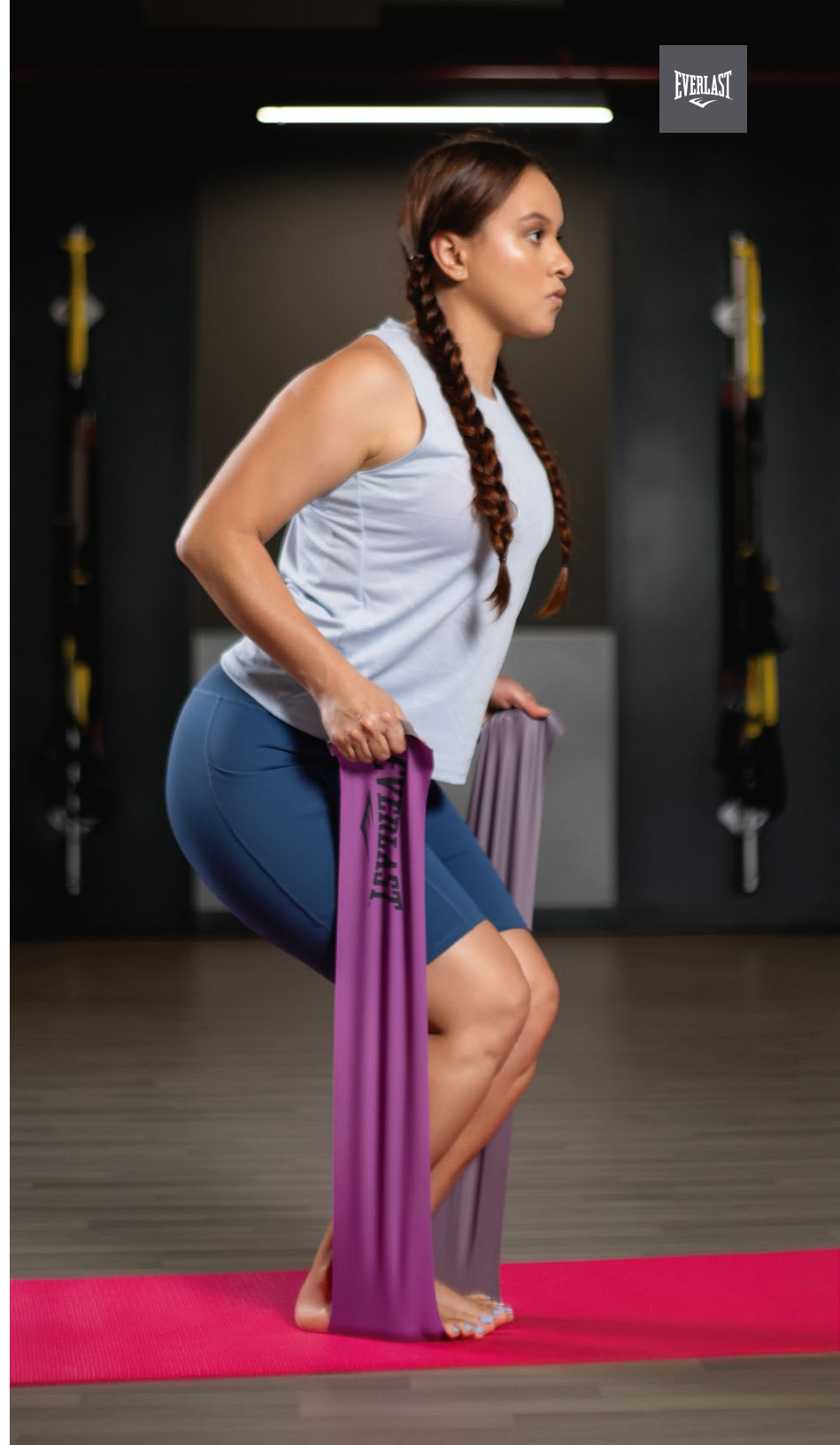


## PILATES BANDS

Perfect for strength training, rehabilitation exercises.  
Helps develop strength, coordination and balance.  
Work the core abs.

-----  
SKU: EVLX4W830

**3** BAND  
SET





# BANS



## LATEX MINIBANDS 3PACK

3-piece resistance bands give you a variety of resistance levels. Light, medium and heavy loops let you adjust the intensity of your workouts to challenge every major muscle group in your body.

**3**  
LEVELS OF  
RESISTANCE

SKU: EVMB71630 COLOR: Black / Grey / Yellow



## LATEX MINIBANDS 5PACK

5-piece resistance bands give you a variety of resistance levels. **LIGHT, MEDIUM, HEAVY, X-HEAVY AND XX-HEAVY**, loops let you adjust the intensity of your workouts to challenge every major muscle group in your body.

**5**  
MINIBANDS &  
LEVELS OF  
RESISTANCE

SKU: EVMB1W550

# BANDS



## LATEX MINI BANDS PLUS

Extra resistance and extra durability to challenge every major muscle group in your body.

### ENGINEERED FOR:

RESISTANCE TRAINING, WARM UP AND REHABILITATION OF UPPER AND LOWER BODY.

SKU: EVMBOW512



## HIP BAND

The durable and non-slip design hip band is made of durable cotton and latex blend.

The fabric is different from latex rubber exercise bands. These hip resistance bands will never slide or roll up when you use them. Inner grip strips inside the bands keep them in place during every exercise. INCREASE MOBILITY , MUSCLE STAMINA AND STRENGTH.

SKU: EVHPOW035 COLOR: Grey

SKU: EVHPOW038 COLOR: Burgundy

SKU: EVHPOW041 COLOR: Purple

LIGHT

MEDIUM

HARD

**3**  
BANDS &  
LEVELS OF  
RESISTANCE



# FITNESS ACCESSORIES



## PUSH UP BARS

STRENGTHEN ABS, PECS, UPPER ARMS, AND TRICEPS.

Simple to use, strong, sturdy and durable. By using your own body weight as resistance, these push-up bars will turn ordinary push-ups into an explosive new workout routine. Uniquely designed to alleviate stress on your wrists and hands. Push ups target your chest, shoulder, and back muscles.

---

**SKU:** EVPU4I14 **COLOR:** Charcoal



## NEOPRENE WEIGHTED GLOVE

Constructed from neoprene, these gloves are built to last and for optimum fit. The anatomic wrist wrap helps to secure the gloves and provide wrist stability.

---

**SKU:** EVWG6I052 **0.5KG**  
**X2**





EST. 1944

EVERLAST





# FITNESS ACCESSORIES



## ARM BLASTER

PRODUCT DIMENSIONS: 23" L X 4" H, PRODUCT WEIGHT: 1KG ONE SIZE FITS ALL.  
Uniquely contoured rigid metal design allows you to isolate your arms and shoulders.  
Webbed nylon belt, a thick, oversized neoprene neck pad, and dense elbow pads.  
The strap features a quick release to adjust it to the perfect position.  
Bulk up your biceps each time you grab a workout Bar with the bicep bomber.

SKU: EVAR9H200  
COLOR: Black

### CURVED BODY DESIGN

The perfectly contoured shape conforms around your torso and cradles your triceps.

### HEAVY DUTY CONSTRUCTION

The arm blaster body is constructed from tough gauge aluminum for a high-level workout.

### SUPERIOR NECK SUPPORT

The elite neck stop is constructed from supreme foam padding for a pain-free experience.

### COMFORT PADDED ENDS

The dual padded design supports your triceps and allows you to perform more reps in comfort.

### INTUITIVE STRAP TECHNOLOGY

The strap features a quick release mechanism for easy adjustment into the ideal position.

## ENGINEERED FOR:

TENSION  
MOTION  
STRENGTH

Our Arm Blaster for biceps is the ideal tool for weight lifting and body building. The blaster body supports your elbows, enabling you to keep correct posture during curls and triceps exercises.



# FITNESS ACCESSORIES



## DELUXE SPEED ROPE

Ball Style socket joint for smooth consistent rotation.  
Adjustable 11' rope for personal customization.  
Grip panels for added grip and control during use.

**NEW**

**11'**  
**FEET**

**SKU:** P00002709 **COLOR:** Red / Black



## DELUXE SPEED ROPE

ADJUSTABLE ROPE UP TO 11 FT (3.35m)  
Suitable for everyone - best jump rope for any workout,  
mastering double unders, exercise and fitness, mma  
training, boxing, bodybuilding, personal training, home  
and outdoor workouts.

**11'**  
**FEET**

**SKU:** EVSJ6S356 **COLOR:** Black / Lime



## ADJUSTABLE WEIGHTED JUMP ROPE

Adjustable 240 gram weight 6 40 G weights.  
Weight pocket with spring loaded to keep weights in place.  
Rubber grips for better control during training.  
The vinyl cord is easily adjustable in length, allowing the athlete to find the optimal length for their height.

**NEW**

**11'**  
**FEET**

**SKU:** P00002708 **COLOR:** Black / Red





# FITNESS ACCESSORIES



## WEIGHTED JUMP ROPE

Weighted rope.

Rubber inserts on the handle, vinyl cord that is easily adjustable in length, allowing the athlete to choose the optimal length for the best workout.

In addition to adjusting the length, the rope can be adjusted by weight, there is a cartridge weighing 130 grams in the handles, the total weight of the rope is 410 grams.

NEW

11'  
FEET

SKU: P00002707 COLOR: Red / Black



## EVERGRIP™ WEIGHTED JUMP ROPE

ENGINEERED FOR: SPEED, ENDURANCE, AGILITY, COORDINATION, TOTAL BODY CONDITIONING

Adjustable length, 9 ft. plastic speed rope.

Evergrip™ Handles provide added grip while training.

Removable weights to challenge your cardio and upper body training.

1.5 Lbs. Maximum Removable Weights Precision Ball Bearing Rotation For Increased Speed.

EVERGRIP™

SKU: 4485 COLOR: Black



## WEIGHTED JUMP ROPE

Best aerobic exercises for burning calories, slimming down, improving flexibility, developing core strength and good heart condition.

Hold comfortably. Ergonomically designed weighted memory foam handles offer extra comfort while also preventing palm sweat and providing a firm grip.

Weights in jump rope handles are removable. Perfect for fitness workouts, cardio training, jumping exercise, cross fit, skipping, speed training, calves, thigh and forearm strengthening, leg training and endurance training.

9'  
FEET

SKU: EVJROW38W COLOR: Black

# FITNESS ACCESSORIES



## FITNESS JUMP ROPE

ADJUSTABLE ROPE UP TO 9 FEET LONG (2.74m)  
This rope is the ideal choice for a custom workout  
Improve cardio endurance, develop your muscles  
And tone your entire body.

9'  
FEET

**SKU:** EVJR1Y526 **COLOR:** Black / Red  
**SKU:** EVJR1Y526 **COLOR:** Black / Grey



## ERGONOMIC JUMP ROPE

Comfortable, durable and fast  
Exercise in comfort - our lightweight design and comfort  
Handles reduce strain on your hands, allowing you to burn  
calories and get in a great workout skipping or jumping  
without unnecessary discomfort

**SKU:** EV3JTP01 **COLOR:** Yellow  
**SKU:** EV3JTP01 **COLOR:** Black  
**SKU:** EV3JTP01 **COLOR:** Pink



## LEATHER JUMP ROPE

High durability and speed  
High quality precision ball bearings  
Comfortable and smooth handling

9'  
FEET

**SKU:** EVLR8800 **COLOR:** Leather



# FITNESS ACCESSORIES



## JUMP ROPE

Ajustable, durable and fast

ENGINEERED FOR: Speed, endurance, agility, coordination, and total body conditioning. Improve cardio endurance, develop your muscles and tone your entire body

SKU: EVJR7Y15-1 COLOR: Transparent

SKU: EVJR7Y15-2 COLOR: Blue

SKU: EVJR7Y15-3 COLOR: Orange

SKU: EVJR7Y15-4 COLOR: Fucsia

SKU: EVJR7Y15-5 COLOR: Green



## JUMP ROPE

Improve your balance, coordination, flexibility, and endurance

Helps develop core strength.

Exercise several muscle groups at once.

9'  
FEET

SKU: EVXR800-BK COLOR: Black

SKU: EVXR800-BL COLOR: Blue

SKU: EVXR800-PK COLOR: Pink

ENGINEERED FOR:  
SPEED, ENDURANCE, AGILITY, COORDINATION,  
AND TOTAL BODY CONDITIONING.



## JUMP ROPE

High durability and speed.

High quality precision ball bearings.

Comfortable, durable and fast.

Exercise in comfort - our lightweight design and comfort foam.

Handles reduce strain on your hands, allowing you to burn calories and get in a great workout.

skipping or jumping without unnecessary discomfort.

SKU: EVJR1Y666 COLOR: Red / Green / Yellow / Blue

9'  
FEET





MULTIPLE WAYS TO TRAIN



PUSHUPS

DIPS

INVERTED ROWS

### ADJUSTABLE POWER BRACKETS

PERFECT FOR BEGINNERS & ADVANCED  
Improve strength and cardio, for all skill levels, secure grip.

Material ensures a secure grip during use.  
Perfect fitness tool used to improve strength and cardio fitness.  
Easily adjustable iron bracket can be modified according to exercise and skill level from 22" to 30"  
Specially designed to be used as hurdles or for dips, pushups, inverted rows and more.

SKU: EVPB5S65 COLOR: Black / Lime

**EVERGRIP**



# FITNESS ACCESSORIES



## HOME TRAINING BAR

PERFECT FOR BEGINNERS & ADVANCED

Three grip positions, narrow, wide, and neutral Turns any doorway into a personal gym, Installs in seconds ideal for pull-ups, push-ups, chin-ups, dips, crunches, and more Uses leverage to hold against the doorway so there are no screws and no damage to door.

SKU: EVDB059 COLOR: Black



ADJUSTABLE PULL UP BAR FOR DIFFERENT DOORWAYS

63 cm / 25 in

EXTEND TO

100 cm / 39 in

Adjustable length 63/100cm  
Tube diameter: 28mm

## DELUXE DOORWAY BAR

EASY TO INSTALL

You only need a screwdriver.

Install in minutes. The safety end caps keep your door from being damaged or marked up and keeps you safe. Please check doorway bar before each use to make sure it is tightly installed.

EASY TO TAKE DOWN WHEN NOT IN USE.

EASY TO MOVE FROM TOP OF DOORWAY TO BOTTOM.

PLACE IT AT PROPER HEIGHT FOR YOUR NEEDS.

SUITABLE FOR ANY STANDARD DOOR FRAME

SKU: EVDB3W150 COLOR: Black



**ANTI-SKID PAD**  
Increase the friction to prevent movement wobble.



**EVA FOAM GRIP**  
Anti-skid, absorbent and comfortable.



**ANTI-SKID RING**  
Reduce the friction between two pieces of tubes.



**REINFORCED ACCESSORY**  
Used for safety and steadiness sake.

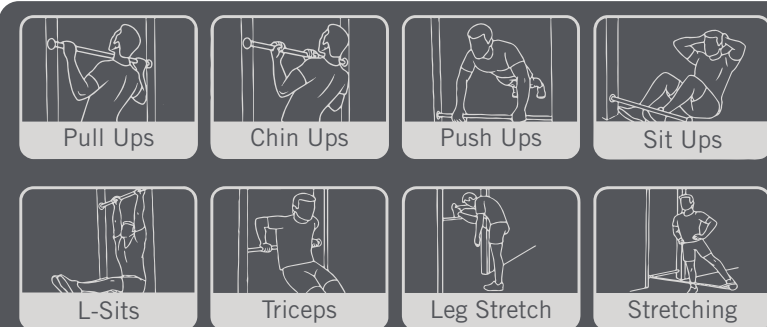


Maximum load: 150kg

**150 KG**  
MAXIMUM CAPACITY

## ENGINEERED FOR:

MULTIPLE EXERCISES AT HOME - OUR HOME PULL UP BAR CAN BE USED FOR PULL UPS, CHIN UP, KNEE RAISES, L-SITS, BACK STRETCHES.



# FITNESS ACCESSORIES

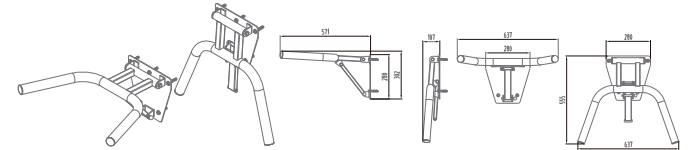


## WALL MOUNTED DIP

(56.5cm x 64cm x 30cm)

Expand your weight room by using the everlast all mounted dip station. Increase the strength of your chest, shoulders And triceps. Once your workout is complete, Return the mount to its space saving position.

SKU: EVWD5R120 COLOR: Black

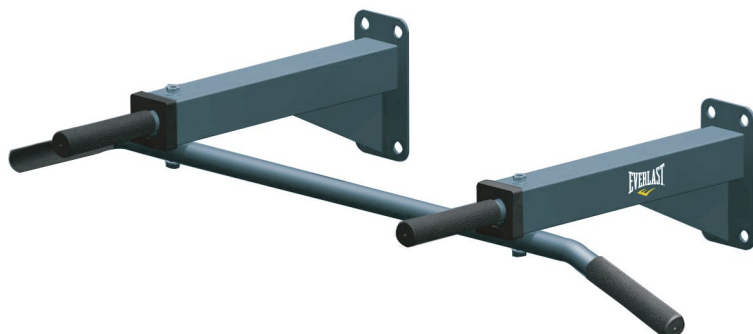


## CHIN UP BAR

Easy assembly & installation  
Holds up to 140kgs  
Made from high quality steel  
Mounts on to any solid wall  
Offers a variety of grip positions & exercises

SKU: EVCH4R207 COLOR: Black

HOLDS UP TO  
**140**  
kgs  
Structure 131cm X 58cm X 60cm



## CHIN UP BAR

Easy assembly & installation  
Made from high quality steel  
Mounts on to any solid wall  
Offers a variety of grip positions & exercises  
ENGINEERED FOR:  
TOTAL BODY CONDITIONING  
STRENGTH TRAINING  
INTENSE CARDIOVASCULAR WORKOUTS

SKU: EVCH9W450 COLOR: Grey / Black

HOLDS UP TO  
**140**  
kgs  
Structure 100cm x 18cm





## AB SLING

THE AB SLING HANGING STRAPS ARE ATTACHMENTS FOR PULL-UP BARS THAT TARGET ABDOMINAL AND LOWER BACK MUSCLES. THESE 2 AB STRAPS HAVE AN LOOP SUPPORT THAT DISPERSES ANY PRESSURE FROM YOUR ARMS WHILE YOU HANG IN PLACE.

**CORE MUSCLE TRAINING:** The Ab Sling is the perfect hanging-strap equipment to use to strengthen and tone your core. Rest your arms into the arm slings and perform knee tucks, crunches, full L-sits, or any other core exercises.

Extra foam cushioning for added comfort.

For all fitness levels.

---

**SKU:** EVAS3R150 **COLOR:** Black





WEIGHTED DIP BELT HELPS BUILD POWER AND STRENGTH IN TRICEPS AND CHEST

**ENGINEERED FOR:**  
INCREASE STRENGTH AND MUSCLE GAINS



# FITNESS ACCESSORIES



## DIP BELT

Dip belt constructed of durable polypropylene with heavy duty steel grommets to secure chain to belt. Contoured belt design provides back support and fits comfortably during training. Steel chain and carabiner mechanism to easily add weight. Weighted dip belt helps build power and strength in triceps and chest. Adjustable, one size fits all.

---

**SKU:** EVDP2W200 **COLOR:** Black

EVERLAST

**MAX OUT YOUR UPPER BODY**  
Increase the additional weight around your waist to get stronger, tone and build muscle faster.





# FITNESS ACCESSORIES



## SUSPENSION SYSTEM DELUXE

LETS YOU USE YOUR BODYWEIGHT WITH THE NATURAL FORCE OF GRAVITY.

Total-body workout system you can set up in less than 60 seconds at home or anywhere you go. Get stronger, build muscle, lose weight and improve flexibility fast no weights required.

Work out total body, burn fat and tone all lean muscles this trainer is a complete bodyweight gym that supports highly metabolic compound exercises and assisted exercise variations for full workouts for every skill level.

Increase muscle endurance & sport performance infinitely variable resistance. Full body resistance trainers feature indexed straps and quick adjust buckles so you can tailor resistance for each exercise.

SKU: EVST9W008 COLOR: Black / Red



ANTI-SLIP  
FOAM RUBBER HANDLE



HEAVY DUTY  
ZINC-ALLOY CARABINER



ADJUSTABLE  
EASY TO SET BUCKLE



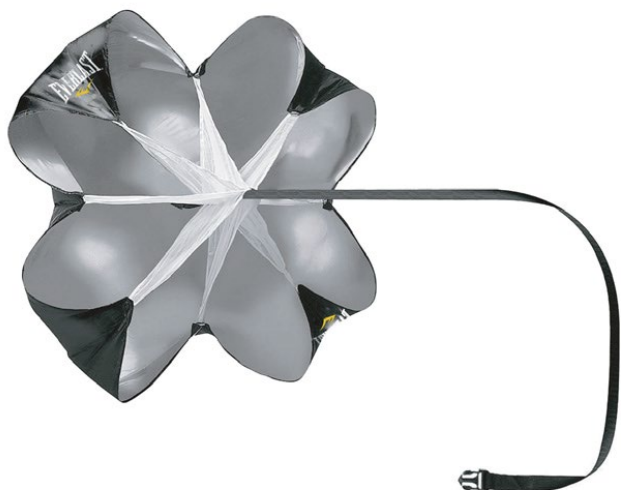
SUPER STURDY  
DOOR ANCHOR

**PACKAGE INCLUDED:**  
TWO BODYWEIGHT RESISTANCE STRAPS  
ONE EXTENSION STRAP  
ONE CARRY POUCH  
ONE USER MANUAL  
ONE DOOR ANCHOR

# FITNESS ACCESSORIES



NEW



## POWER CHUTE

IMPROVES SPEED AND ACCELERATION:

This running parachute is designed to produce 15-30 pounds of resistance during sprinting to simultaneously perform speed and strength training.

It effectively promotes explosiveness and stamina that is vital in field and track sports.

SKU: EVPC9W292 COLOR: Black



**55"**  
DIAMETER

APPROXIMATELY 15-30 LBS. OF RESISTANCE

**PACKING CONTENT**

ONE 55 INCHES UMBRELLA  
ONE WAIST BELT RESISTANCE PARACHUTE  
ONE CARRYING BAG

ADJUSTABLE BELT: 2-inch heavy-duty belt is fully adjustable and will comfortably fit almost any athlete.

The 360-degree rotation belt allows you to train in any direction.

When positioned on the right or left hip, it allows you to get off the line laterally.



## RECOIL 360°

Develops proper acceleration mechanics while challenging your postural strength and stability during partner harness runs.

360° rotation belt with free motion ring allows for movement in any direction.

Trains all sport movements while switching between resistance and assistance.

Designed for solo use or for training with a partner.

CABLE STRETCHES

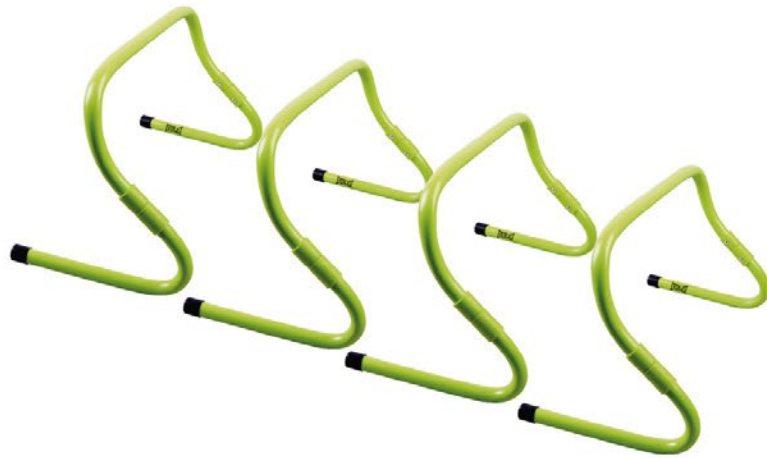
from 8 to 22 feet with resistance that increases from 15 to 50 lb.

Unique flexi-cord design stretches against your movement to build strength or pulls you along to increase speed and improve your body's efficiency during direction changes.

SKU: EVRC1W360 COLOR: Black

**360°**  
DEGREES OF MOVEMENT

# FITNESS ACCESSORIES



## ADJUSTABLE HURDLES

ADJUSTABLE-HEIGHT OPTIONS OF 8" AND 12"  
FOR MULTIPLE TRAINING CONFIGURATIONS  
INDOORS OR OUTDOORS

Adjustable height for a varied challenge.  
No assembly necessary.  
Offers multiple workout configurations.  
Suitable for speed and accuracy training.  
Lightweight design for easy storage.

INCLUDES  
**4**  
HURDLES

SKU: EVAH9W040 COLOR: Green



## AGILITY LADDER

16 FEET IN LENGTH WITH 10 ADJUSTABLE FLAT RUNGS

Find the perfect rhythm in your training with this performance focused product. Improve your acceleration, lateral speed and change of direction while enhancing balance, Rhythm and body control. These core skills are critical to any athlete that wants to perform At a faster level than the competition in any sport.

Develop explosive power, speed and better footwork.  
This flat rung ladder improves technique and responsiveness.  
The quick ladder caters to all sports as it increases efficiency for all athletes.

SKU: EVAL9W510 COLOR: Green / Black

**5m**  
**16 FEET**  
FLAT-RUNG AGILITY LADDER



CARRY STORAGE BAG  
INCLUDED





## AB MAT TRAINER

EVERLAST AB MAT TRAINER PROVIDES:

Offers low-back comfort and support during ab exercises.

The contoured shape promotes safe lumbar extension, placing the abdominal muscles on a pre-stretch position resulting in a maximal abdominal activation. It is the perfect complement to a mat routine, elevating the body off the floor during crunches, curls, Sit-ups, side bends and back extensions.

---

**SKU:** EVAB9W100 **COLOR:** Black



EVERLAST

EVERLAST

EVERLAST



# KETTLEBELLS



## PLASTIC KETTLEBELL

SKU: EVKB3W100 COLOR: Black **10Lb**



## PVC KETTLEBELLS

Works All Muscles Simultaneously And Increases Heart Rate While Strengthening And Sculpting The Entire Body.

SKU: EVKB2S05 COLOR: Black **5Lb**

SKU: EVKB2S08 COLOR: Burgundy **8Lb**

SKU: EVKB2S10 COLOR: Navy **10Lb**



## VINYL DIPPED KETTLEBELLS

Total Body Cardio Workout, Burn Fat And Effective Toning works great for your stabilizing muscles for active recovery build your strength, stability and power improve movement, agility and speed

SKU: EVVK9W004 COLOR: Orange **4kg**

SKU: EVVK9W006 COLOR: Red **6kg**

SKU: EVVK9W008 COLOR: Blue **8kg**

SKU: EVVK9W010 COLOR: Lime **10kg**

SKU: EVVK9W012 COLOR: Grey **12kg**



# KETTLEBELLS



## SOFT KETTLEBELL

Heavy Duty Stitching For Extra Strength And Durability.  
High Density Stuffing To Keep Weight Centered During Use.  
Flat Bottom.

Handles Are Easy To Grip And Will Hold Chalk.  
Soft Material And Stuffing Provides Safety During  
Workouts And Protects Flooring.

---

**SKU:** EVSK7R16 **16Kg** **COLOR:** Black / Orange





**H.I.T.** HIGH INTENSITY TRAINING

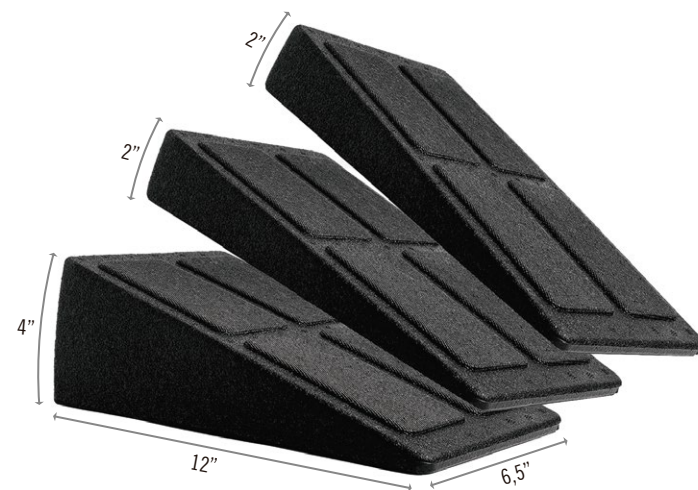


## KETTLEBELL DLX

A training plan with kettlebell is suitable for all who want to vary your training fitness and force. Everlast kettlebells are available in the weight increments you need from lightweight Beginner bells starting at 4kg / 9lb to 32kg / 70lb. Color-coded handles for easy recognition. Texture matters. A well formed, balanced, and properly textured kettlebell feels better in the hand and performs better in motion.

- SKU: EVIK8R009 COLOR: White 4kg / 9lb
- SKU: EVIK8R018 COLOR: Pink 8kg / 18lb
- SKU: EVIK8R026 COLOR: Blue 12kg / 26lb
- SKU: EVIK8R035 COLOR: Yellow 16kg / 35lb
- SKU: EVIK8R044 COLOR: Grey 20kg / 44lb
- SKU: EVIK8R053 COLOR: Green 24kg / 53lb
- SKU: EVIK8R070 COLOR: Red 32kg / 70lb





## SQUAT WEDGE BLOCKS

GET MORE OUT OF YOUR SQUATS

Athletes in all types of sports and disciplines have recognized the benefits of squat wedges as a means for increasing squat depth and range of motion, engaging the quads, protecting and strengthening the knees.

**3**  
BLOCKS

SKU: EVSW4W324



A close-up photograph of a person's hands holding a blue and black medicine ball. The ball is spherical with a textured black fabric cover and blue panels. The word "EVERLAST" is printed in white, bold, sans-serif capital letters on the upper blue panel, with a white stylized "E" logo underneath. The weight "20lbs" is printed in white, bold, sans-serif font on the lower blue panel. A black strap with a diamond-patterned stitching is visible across the middle of the ball. The person's hands are positioned on the left and right sides of the ball, and their forearms are visible. The background is a blurred outdoor setting with a concrete floor.

**EVERLAST**

**20lbs**

# MEDICINE BALL



BODY TRAINING TOOL THAT HELPS DEVELOP MUSCULAR STRENGTH,  
ENDURANCE, POWER, STABILITY AND JOINT INTEGRITY

Improve your overall body muscle mass, cardiovascular endurance, and  
hand-eye coordination. Run longer, jump farther, lift more and perform better.  
Textured surface allows for a high quality grip even when wet.

-----  
**SKU:** EVRM2W15 **5 kg** **COLOR:** Black / Blue



STRENGTH TRAINING, TOTAL BODY CONDITIONING,  
ENDURANCE, AGILITY, COORDINATION,CARDIO CONDITIONING.





# MEDICINE BALL



BODY TRAINING TOOL THAT HELPS DEVELOP MUSCULAR STRENGTH, ENDURANCE, POWER, STABILITY AND JOINT INTEGRITY

Improve your overall body muscle mass, cardiovascular endurance, and hand-eye coordination. Run longer, jump farther, lift more and perform better. Textured surface allows for a high quality grip even when wet.

- SKU: EVRMOW02 **2 kg** COLOR: Black / Purple
- SKU: EVRMOW03 **3 kg** COLOR: Black / Green
- SKU: EVRMOW04 **4 kg** COLOR: Black / Orange
- SKU: EVRMOW05 **5 kg** COLOR: Black / Blue
- SKU: EVRMOW06 **6 kg** COLOR: Black / Red



AVAILABLE 2 3 4 5 6  
Disponibile KG KG KG KG KG

STRENGTH TRAINING, TOTAL BODY CONDITIONING, ENDURANCE, AGILITY, COORDINATION, CARDIO CONDITIONING.



# SLAM BALL



**10LB**



**20LB**

## LOW BOUNCE

Due to the heavy weight composition of these Slam Balls, they will supply a low and even bounce with and provide complete control to users.

## STRENGTH DEVELOPMENT

Everlast Slam Ball has been designed to improve a variety of muscle groups, making it ideal for functional training that can assist in response time, endurance and speed.

## SLAM BALL

Slam Balls will help you unleash your power! Engage your entire body in a high-intensity EVERLAST Slam Ball workout that builds strength, cardio and explosive power.

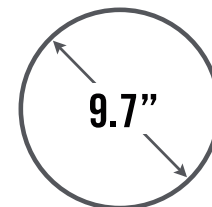
Rugged, textured surface that provides easy gripping and helps you keep a sure handle on the ball.

SKU: EVSM2W010 10LB COLOR: Black

SKU: EVSM2W020 20LB COLOR: Black

## SPECIAL TREAD DESIGN

Easy to grip surface: features rugged, textured surface with ergonomic triangular patterns for a better grip, increasing both efficiency and safety when exercising.



# MEDICINE BALL



## POWERCORE BAG MEDICINE BALL

Medicine ball is a great tool for a complete body workout and ideal for building muscle. It can be used for a range of applications such as gymnastics, general fitness, increasing stamina and therapeutic applications in physical rehabilitation programs.

---

**SKU:** EV3085 **5kg**

**COLOR:** Black

**SKU:** EV3086 **4kg**

**SKU:** EV3087 **3kg**

**SKU:** EV3088 **2kg**

**SKU:** EV3089 **1kg**



# WALL BALL

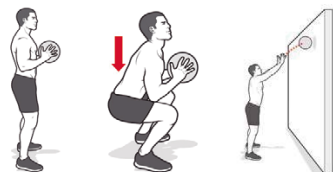


## WALL BALL (10lb 14lb 20lb 30lb )

CARBON FIBER FABRIC

Balls are ideal for rotational movements, core exercises of many types and dynamic strength training all while the ball remains dimensionally stable and balanced and moisture and scuff resistant.

Soft shell, heavy duty vinyl coated nylon construction design holds its shape over time and allows you to strike balls with arms and legs for more diverse training.



SKU: EVWL7R010 10lbs COLOR: Black / Orange

SKU: EVWL7R014 14lbs COLOR: Black / Green

SKU: EVWL7R020 20lbs COLOR: Black / Blue

SKU: EVWL7R030 30lbs COLOR: Black



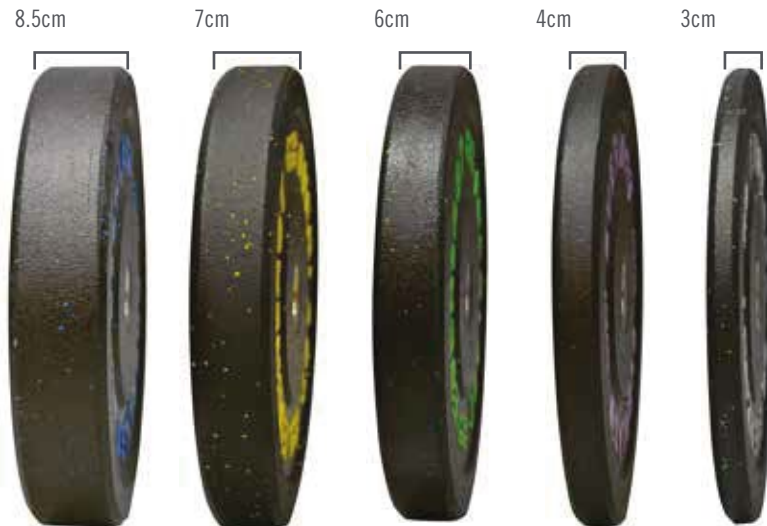








# PLATES



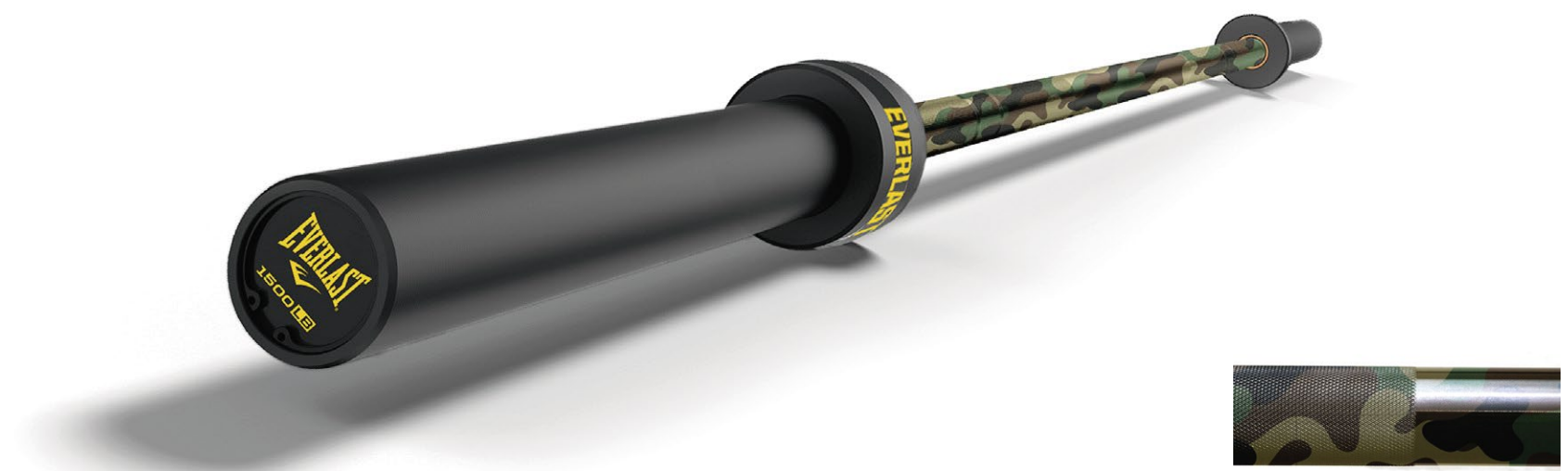
## HI-IMPACT BUMPER PLATES

DIAMETER: 45cms

Heavy-duty bumper plates designed to resist the heaviest of workouts.  
Made of recycled crumb rubber.  
Drop test: 2m x 8000 repetitions.  
Steel rim bushing.

- SKU: EVBP8R010 10LB COLOR: Grey
- SKU: EVBP8R015 15LB COLOR: Pink
- SKU: EVBP8R025 25LB COLOR: Green
- SKU: EVBP8R035 35LB COLOR: Yellow
- SKU: EVBP8R045 45LB COLOR: Blue





**28mm CROSS FIT BARS, 7'**  
**25mm CROSS FIT BARS, 6'**

Brass bushings for reliable spin and satisfactory whip  
Knurling marks for both olympic and power lifting Bar collars are snap ring design  
Bearings allow the hard chrome sleeves to rotate freely promoting a smoother, quieter spin.  
Material :Alloy Steel with heat treatment

-----  
**SKU: EVOB0R186 (1500 LB) WEIGHTLIFTING BAR, 7'**



LOCKS NOT INCLUDED  
**SKU: EVOCR100**



# TRAINING RACK



## STRENGTH TRAINING RACK

### MULTIDIRECTIONAL WORKOUTS:

Use the Synergiee Landmine Platform with your barbell to introduce new modalities for lifting, lunges, squats, rows, presses, and rotational exercises. This lever is an incredible tool for building functional strength by mimicking 360-degree movement patterns we execute in our everyday lives that require strength, power, and coordination! PLUS, this platform includes a spot to anchor your Battle Rope!

SKU: EVTR1W250

COLOR: Black / Yellow

### ENGINEERED FOR:

STRENGTH TRAINING  
TOTAL BODY CONDITIONING  
SPORT SPECIFIC TRAINING  
CARDIO CONDITIONING

# 360 DEGREE

PIVOTING DESIGN IDEAL FOR  
A BROAD RANGE OF EXERCISES



## WOOD GYM RINGS

Perfect for multiple exercises such as: Push-ups, iron cross, dips, muscle ups, pull-ups and many more.

Each set contains two rings and two numbered straps.

Superior feel of natural wood for a secure grip, even without chalk

Sold in sets of 2

Diameter: 1.25" standard

Firm grip with or without chalk

Includes (2) 1.5" Heavy Duty Black Nylon Straps with Buckle\*

18' Strap long straps, 25mm wide strap

---

**SKU:** EVGROW125





## ROPES



### POWER ROPE

ENGINEERED FOR: TOTAL BODY CONDITIONING, STRENGTH, CARDIOVASCULAR TRAINING, IMPROVED GRIP STRENGTH  
30' Rope, 1.5" Diameter.

Durable synthetic blend with contoured handles.

ENGINEERED FOR:

Total body conditioning  
Strength training  
Intense cardiovascular workouts

---

**SKU:** EVBR9W623 **COLOR:** BLACK

**SIZE:** BATTLE ROPE 9 m x 38 mm diámetro



### CLIMBING/UTILITY ROPE WITH ANCHOR

Climbing ropes have always been one of the most popular and standard equipment requests for overall improvement of physical fitness and muscle tone, particularly for upper arms and shoulders.

Extremely popular training apparatus for strength, grip and arm coordination skills for use in physical education, wrestling, gymnastics, military, and cross-fit applications. Landing mats, spotting and supervision suggested when using.

---

**SKU:** EVCR4R380

**SIZE:** 38mm /length: 15m

**SKU:** EVCR4R500

**SIZE:** 50mm /length: 15m





## PLYOMETRIC WOODEN BOX

Our 3-in-1 power box is a staple item of any fitness studio or crossfit box. Simply rotate the wooden box to your desired height and jump.

This item is cnc machine cut with rounded edges and pre drilled screws makes this box a very fast to install.

Plyometric exercises are perfect to improve an athletes ability and skill and will seriously increase speed and strength.

---

**SKU:** EVBX8R243

**SIZE:** 20" x 24" x 30"

# PLYOMETRIC BOX



## SOFT PLYOMETRIC BOX

The soft shell cushions the impact and protects the shins and knees on those missed jumps. plyometric training will develop your explosivity and power while increasing balance and agility

---

**SKU:** P00001772

**SIZE:** 20" x 24" x 30"

# AEROBIC STEPPER



## AEROBIC STEPPER

Internal storage compartment.

Incline / decline / flat

Non slip textured rubber surface

**Dimensions:** 121.5 x 34.5 x 35.5cm

has 3 position angle support.

### Flat

Choice of two heights: With two heights to choose from (8in or 14in), you can step, jump and lunge your way to improved aerobic fitness - or perform traditional flat workout bench strength exercises.

### Incline

Create an incline workout bench: With a simple adjustment of the Deck's secure 'lid', you have yourself an incline workout bench which is an ideal position for those exercises which build the upper chest, such as flys and presses.

### Decline

Clip in feet to decline the Deck: Easily fold and lock one of the Deck's feet into place to focus on decline exercises such as crunches or standing rows with a resistance band placed inside one of the clips.

**SKU:** EVSP1W805

**COLOR:** Red / Black

## 2 HEIGHT POSITIONS

ADJUSTABLE COMPACT AND STACKABLE DESIGN.  
NON-SLIP SWEAT-RESISTANT WORKOUT SURFACE.  
SIMPLE CLICK AND LOCK FEET ADJUSTMENT.  
IDEAL FOR EFFECTIVE CARDIO EXERCISES.  
SAFE AND SECURE NON-SLIP.





**EVERLAST**  
E

**WEIGHT LIFTING  
GLOVES**

# WEIGHT LIFTING & EXERCISE GLOVES



## PULSE

Comfortable Fit Anatomic Shape  
 Breathable And Flexible.  
 Maximum Protection And Durability.  
 Adjustable Velcro Closure  
 wrist puller for easy removal

**SKU:** EVWG3H441 **COLOR:** Black / Black **S - M - L - XL**  
**SKU:** EVWG3H444 **COLOR:** Black / Lemon  
**SKU:** EVWG3H445 **COLOR:** Black / Red



## AUTHORITY III

Comfortable fit anatomic shape Velcro closure maximum grip and durability  
 Brethable and flexible Adjustable velcro closure.  
 Maximum protection and durability Anatomic shape, comfortable fit.

**SKU:** EVWG7K8A51 **COLOR:** Black  
**SKU:** EVWG7K8A52 **COLOR:** Black / Grey

**S - M - L - XL**



# WEIGHT LIFTING & EXERCISE GLOVES



## ECLIPSE

Pull off tabs for easy removal.  
Breathable and flexible.  
Comfortable fit.  
Adjustable velcro closure added protection.

SKU: EVWG9H061    **COLOR:** Black  
SKU: EVWG9H062    **COLOR:** Black / Gray

S - M - L - XL

FEATURING  
**EVERCOOL™**  
TECHNOLOGY



## POWER HOUSE II

Pull Off Tabs For Easy Removal Comfortable Fit Anatomic Shape  
Velcro Closure Maximum Grip And Durability Breathable And Flexible.  
Adjustable Wrist Wrap Provides Support And Flexibility Maximum  
Protection And Durability.

SKU: EVWG7K9P01    **COLOR:** Black  
SKU: EVWG7K9P02    **COLOR:** Grey / Black

S - M - L - XL

ENGINEERED FOR: WEIGHT LIFTING    FEATURING  
**EVERCOOL™**  
TECHNOLOGY





# WEIGHT LIFTING & EXERCISE GLOVES



## BULLET

Pull off tabs for easy removal.  
Breathable and flexible. anatomic shape.  
Comfortable fit.  
Adjustable wrist wrap provides strong support.  
Maximum grip and added protection.

SKU: EVWG9H911 COLOR: Black

S - M - L - XL



## TOTAL STRENGTH III

Pull Off Tabs For Easy Removal Anatomic Shape.  
Comfortable Fit. Breathable And Flexible.  
Adjustable Velcro Closure. Maximum Protection And Durability.

SKU: EVWG7K7T01 COLOR: Black  
SKU: EVWG7K7T02 COLOR: Grey / Black

ENGINEERED FOR:  
WEIGHT LIFTING

S - M - L - XL  
FEATURING  
**EVERCOOL™**  
TECHNOLOGY







# WEIGHT LIFTING & EXERCISE GLOVES



## VELVET

Comfortable Fit Anatomic Shape  
Breathable And Flexible.  
Maximum Protection And Durability.  
Adjustable Velcro Closure  
wrist puller for easy removal

SKU: EWG6S401    **COLOR:** Black    **XS - S - M**  
SKU: EWG6S402    **COLOR:** Black / Pink



## HEATHER

Pull off tabs for easy removal  
Comfortable fit  
Anatomically shaped  
Mesh ventilation panels.  
Silicone print in palms for maximum grip.  
Adjustable wrist wrap provides support and flexibility

SKU: EVWG4F001    **COLOR:** Black  
SKU: EVWG7F001    **COLOR:** Neon Orange  
SKU: EVWG7F002    **COLOR:** Neon Yellow  
SKU: EVWG7F003    **COLOR:** Neon Pink  
SKU: EVWG4F005    **COLOR:** Purple  
SKU: EVWG4F002    **COLOR:** Lila  
SKU: EVWG4F006    **COLOR:** Pink

**ENGINEERED FOR:**  
WEIGHT LIFTING  
LIGHT EXERCISE  
CYCLING  
**S - M**  
FEATURING  
**EVERCOOL™**  
TECHNOLOGY



# WEIGHT LIFTING & EXERCISE GLOVES



## BREEZE

Anatomically shaped.  
Breathable and flexible.  
Comfortable fit.  
Maximum grip and protection.  
Adjustable wrist wraps provides support and flexibility.

SKU: EVWG9H641

COLOR: Black / Pink

SKU: EVWG9H642

COLOR: Gray / Black

SKU: EVWG9H643

COLOR: Black / Pink

S - M - L  
FEATURING  
**EVERCOOL™**  
TECHNOLOGY



## VENTO

Pull off tabs for easy removal.  
Anatomically shaped.  
Breathable and flexible.  
Comfortable fit.  
Silicone print in palms for maximum grip.  
Adjustable wrist wrap provides support and flexibility.

SKU: EVWG9H751

COLOR: Black / Gray

SKU: EVWG9H752

COLOR: Black / Pink

S - M - L  
FEATURING  
**EVERCOOL™**  
TECHNOLOGY



## SNAP

Pull off tabs for easy removal.  
Breathable and flexible.  
Anatomically shaped.  
Comfortable fit.  
Maximum grip and protection.  
Stretch and snug fit to your hands.

SKU: EVWG9H215

COLOR: Black / Pink

L  
FEATURING  
**EVERCOOL™**  
TECHNOLOGY



# WEIGHT LIFTING & EXERCISE GLOVES



## ERGO

Comfortable fit  
Anatomic shape  
Breathable and flexible  
Maximum protection and durability  
Adjustable velcro closure

**SKU:** EVWG2F341 **COLOR:** Gray / Black / Yellow

**SKU:** EVWG2F342 **COLOR:** Red / Black / White

**SKU:** EVWG2F343 **COLOR:** Blue / Black / White

S - M - L - XL



## U-PLUS

Comfortable fit  
Anatomic shape  
Breathable and flexible  
Maximum protection and durability  
Adjustable velcro closure

**SKU:** EVWG5H702 **COLOR:** Gray / Black / Yellow

**SKU:** EVWG5H703 **COLOR:** Gray / Black / Pink

M

# CYCLING GLOVES



## GIRO

ELASTIC TOP HAND MATERIAL FOR PERFECT FIT  
PALM PADDING DESIGNED TO PROTECT YOUR  
YOUR HANDS AND ENHANCE FLEXIBILITY  
REINFORCEMENTS AT HIGH ABRASION ZONES  
FOR MAXIMUM PROTECTION AND DURABILITY  
PULL OFF TABS FOR EASY REMOVAL  
ADJUSTABLE CLOSURE PROVIDES A SECURE FIT

-----  
**SKU:** EVCG6H111 **COLOR:** Black / Lime

**S - M - L - XL**

**SKU:** EVCG6H112 **COLOR:** Black / Blue

**SKU:** EVCG6H113 **COLOR:** Black / Rhodamine

**SKU:** EVCG6H114 **COLOR:** Black / Red





**H.I.T.** HIGH INTENSITY TRAINING

EVERLAST

PROVIDE ADDITIONAL WRIST SUPPORT ANYTIME YOU NEED IT.



## WEIGHTLIFTING WRIST WRAPS

Wrist Wraps provide additional wrist support anytime you need it. Rubber closure for easy, custom tightening. Made from a cotton, elastic, and polyester blend that absorbs excess moisture and won't irritate the skin.

**SKU:** EVWR7R527 **COLOR:** Black

**ENGINEERED FOR:**  
PROVIDE WRIST SUPPORT FOR BOTH MEN AND WOMEN AND CAN BE USED IN A WIDE VARIETY OF SPORTS AND FITNESS ACTIVITIES

**ONE  
PAIR**  
LENGTH 20"



## HIGH PERFORMANCE KNEE WRAPS

Made of heavy duty elastic, 78" inches long / 3" wide.  
Knee wraps provide therapy and compression for the knee.  
Cold pack therapy is recommended for optimum recovery  
Of acute knee injuries.  
Wear during intense training to help prevent injuries.  
One size fits all, sold as a pair.

**SKU:** EVKW9H752 **COLOR:** Black / Red

**ENGINEERED FOR:**  
PROVIDE IMMENSE SUPPORT, STABILITY AND PROTECTION OF YOUR KNEES  
DESIGNED TO ADJUST TO YOUR MOVEMENTS WITH A HIGH-PERFORMANCE  
STRETCHABLE FABRIC, THE LIFTING WRAPS WEIGHTLIFTING SUPPORT  
BRACES ARE SURE TO OFFER YOU TOP-NOTCH STRETCHING WHICH FEELS  
EXTREMELY NATURAL.

**NEW**

**ONE  
PAIR**  
LENGTH 78"



## PALM PROTECTOR

Removes excess material from the fitness glove  
Comfort-cooling solution for your hands  
Radial finger loops provide fast on/off action  
Optimum palm protection, positioning and grip

**SKU:** EVPP1000 **COLOR:** Black

**ONE  
SIZE**  
FITS ALL

**ENGINEERED FOR:**  
SUPERIOR HAND PROTECTION  
DURING WEIGHTLIFTING



# BAR PADS



**SAFETY STRAPS**  
COMES WITH TWO VELCRO STRAPS TO KEEP THE SHOULDER FOAM PROTECTOR IN PLACE AND PREVENT INJURY.

## SHOULDER FOAM PROTECTOR DIMENSIONS

17.5" X 3.5" X 1.3" THICK

Ergonomic pad designed to fit over any standard or olympic barbell .  
Reduce the pressure on your back and shoulders when performing heavy squat sets.  
Lightweight and compact, perfect for carrying in gym bags.  
Easy to attach & remove in seconds.

Reduce the risk of injury .  
Fits perfectly on all olympic size bars.  
Anti-slip - it won't easily slip or roll around the bar for up most comfort.  
Ergonomic design for even weight distribution across the shoulders .

**SKU: EVSP9W032**

**COLOR: Gray**





## CONTOURED WEIGHT LIFTING BELT

Used during weightlifting activities.  
Expanded back support & more comfort with less irritation.  
Snug fit adds support and encourages proper form.  
Created for comfort and flexibility, provides exceptional support for the back.  
Encourages correct form throughout weight lifting routines.

---

**SKU:** EVSB4S39-SM **COLOR:** Black **S / M** FITS WAIST **SIZES 24"/34".**  
**SKU:** EVSB4S39-ML **COLOR:** Black **M / L** FITS WAIST **SIZES 34"/48".**



## UNIVERSAL WEIGHT LIFTING BELT

4"/6" WIDE WATERPROOF FOAM CORE BELT IS HAND WASHABLE, AIR DRY  
One Adjustable Size.  
Maximum lower back and abdominal support for heavier lifts!  
Strong and durable.  
This contoured belt helps you achieve killer results.  
Safely and comfortably.

---

**SKU:** EVUB084 **COLOR:** Black **4"**  
**SKU:** EVUB086 **COLOR:** Black **6"**



**EVERLAST**  


**HYDRATION &  
ACCESORIES**





CUP-HOLDER FRIENDLY



HOTTER & COLDER FOR LONGER



BPA FREE



# TUMBLER

STAINLESS STEEL / DOUBLE LAYER / INSULATED



**24**  
HOURS



KEEP HOT 6 HOURS  
MANTIENE CALIENTE  
POR 6 HORAS



# TUMBLER



## 24 HOURS



100% Stainless steel / Fits most cup holders / BPA FREE

Keep hot & cold / Double wall vacuum insulation

Multifunctional cap / Easy grip handle

100% Acero inoxidable / Apto para portavasos / Sin contenido bpa.

Mantiene las bebidas calientes o frías / Aislamiento de doble pared

Tapa multifuncional / Fácil de llevar



INCLUDES / INCLUYE  
2 Straws / 2 Pajillas  
1 Straw brush / 1 Cepillo  
1 Lid / 1 Tapa

Cup-Holder  
Friendly

## MASTER 1200ml (40oz)

● SKU: EVTB4W120-BG 1200ml COLOR:Beige

● SKU: EVTB4W120-GN 1200ml COLOR:Green

● SKU: EVTB4W120-PK 1200ml COLOR:Pink



INCLUDES / INCLUYE  
2 Straws / 2 Pajillas  
1 Straw brush / 1 Cepillo  
1 Lid / 1 Tapa

Cup-Holder  
Friendly

## MASTER 900ml (30oz)

● SKU: EVTB4W910-CH COLOR: Charcoal

● SKU: EVTB4W910-GN COLOR: Green

● SKU: EVTB4W910-PR COLOR: Purple



# TUMBLER



## 24 HOURS



100% Stainless steel / Fits most cup holders / BPA FREE

Keep hot & cold / Double wall vacuum insulation

Multifunctional cap / Easy grip handle

100% Acero inoxidable / Apto para portavasos / Sin contenido bpa.

Mantiene las bebidas calientes o frías / Aislamiento de doble pared

Tapa multifuncional / Fácil de llevar



INCLUDES / INCLUYE  
2 Straws / 2 Pajillas  
1 Straw brush / 1 Cepillo  
1 Lid / 1 Tapa

### EVERYDAY 900ml (30oz)

● **SKU:** EVTB4W900-PR **COLOR:** Purple

● **SKU:** EVTB4W900-BK **COLOR:** Black

● **SKU:** EVTB4W900-TQ **COLOR:** Turquoise



Cup-Holder Friendly



INCLUDES / INCLUYE  
2 Straws / 2 Pajillas  
1 Straw brush / 1 Cepillo  
1 Lid / 1 Tapa

### EVERYDAY 600ml (20oz)

● **SKU:** EVTB4W600-NA 600ml **COLOR:** Navy

● **SKU:** EVTB4W600-BG 600ml **COLOR:** Beige

● **SKU:** EVTB4W600-PK 600ml **COLOR:** Pink



Cup-Holder Friendly







# TUMBLER

 **24 HOURS**

- 100% STAINLESS STEEL
- 100% ACERO INOXIDABLE
- BPA FREE NO TOXINS SIN BPA SIN TÓXICOS
- DOUBLE WALLED INSULATION AISLAMIENTO DE DOBLE PARED
- LEAK PROOF A PRUEBA DE FUGAS

100% Stainless steel / Fits most cup holders / BPA FREE  
 Keep hot & cold / Double wall vacuum insulation  
 Multifunctional cap / Easy grip handle  
 100% Acero inoxidable / Apto para portavasos / Sin contenido bpa.  
 Mantiene las bebidas calientes o frías / Aislamiento de doble pared  
 Tapa multifuncional / Fácil de llevar



Sip or Drink



INCLUDES / INCLUYE  
1 Straw brush / 1 Cepillo

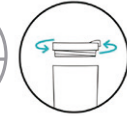


## H2O 900ml (30oz)

- **SKU: EVT4W920-NA 900ml COLOR: Navy**
- **SKU: EVT4W920-KH 900ml COLOR: Khaki**
- **SKU: EVT4W920-LI 900ml COLOR: Lilac**



Cup-Holder Friendly



Sip or Drink



INCLUDES / INCLUYE  
1 Straw brush / 1 Cepillo

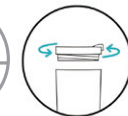


## H2O 600ml (20oz)

- **SKU: EVT4W620-BK 600ml COLOR: Black**
- **SKU: EVT4W620-GN 600ml COLOR: Green**



Cup-Holder Friendly





# TUMBLER



## 24 HOURS



100% Stainless steel / Fits most cup holders / BPA FREE

Keep hot & cold / Double wall vacuum insulation

Multifunctional cap / Easy grip handle

100% Acero inoxidable / Apto para portavasos / Sin contenido bpa.

Mantiene las bebidas calientes o frías / Aislamiento de doble pared

Tapa multifuncional / Fácil de llevar



## HYDRO 900ml (30oz)

● **SKU:** EVTB4W980-RD 900ml **COLOR:** Red

○ **SKU:** EVTB4W980-WT 900ml **COLOR:** White



Cup-Holder  
Friendly



**LEAK  
PROOF**

A PRUEBA  
DE FUGAS



## ESSENTIAL 600ml (20oz)

● **SKU:** EVTB4W680-CH 600ml **COLOR:** CHARCOAL

○ **SKU:** EVTB4W680-PK 600ml **COLOR:** PINK



Cup-Holder  
Friendly



**LEAK  
PROOF**

A PRUEBA  
DE FUGAS



# COFFEE MUG



**24**  
HOURS



100% Stainless steel / BPA FREE  
Keep hot & cold / Double wall vacuum insulation  
100% Acero inoxidable / Sin contenido bpa.  
Mantiene las bebidas calientes o frías / Aislamiento de doble pared.



## INSULATED COFFEE MUG 380ml / 13oz

- SKU: EVCF4W380-BK 380ml COLOR: Black
- SKU: EVCF4W380-BG 380ml COLOR: Beige



Cup-Holder Friendly



**LEAK PROOF**  
A PRUEBA DE FUGAS



## INSULATED MUG VOYAGE 320ml / 11oz

- SKU: EVCF4W320-WT 320ml COLOR: WHITE
- SKU: EVCF4W320-AQ 320ml COLOR: AQUA



**LEAK PROOF**  
A PRUEBA DE FUGAS







# SIZE COMPARISON



Cup-Holder  
Friendly



Hotter & colder  
for longer



BPA FREE

# HYDRATION



LID



HANDLE

## TUMBLER BOTTLE

STYLISH, DURABLE, SAFE  
100% Stainless steel bottle.  
Fits most cup holders.  
Keep hot & cold.  
Double wall vacuum insulation  
Multifunctional cap.  
Easy grip handle  
BPA free.

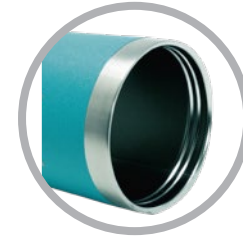
**900ml**

SKU: EVIB3Y900-GD COLOR: GOLD

# HYDRATION



LID



MOUTH



BOTTOM

## EVERYDAY TUMBLER

STYLISH, DURABLE, SAFE  
100% Stainless steel bottle.  
Fits most cup holders.  
Keep hot & cold.  
Double wall vacuum insulation  
Multifunctional cap.  
BPA free.

**900ml**

SKU: EVIB3Y890-GN COLOR: GREEN



# HYDRATION



LID



MOUTH



BOTTOM

## ESSENTIAL INSULATED MUG

STYLISH, DURABLE, CLEAR, SAFE  
Made from 100% leak-proof stainless steel.  
BPA free.  
Keeps drinks hot or cold.  
Double wall insulation.  
Easy to use with one click button cap.

**580ml**  
100% BPA-FREE

-----  
**SKU:** EVCF3U423-BK **COLOR:** BLACK  
**SKU:** EVCF3U423-GN **COLOR:** GREEN  
**SKU:** EVCF3U423-PK **COLOR:** PINK

# HYDRATION



LID



MOUTH

## VOYAGE INSULATED MUG

STYLISH, DURABLE, CLEAR, SAFE  
Made from 100% leak-proof stainless steel.  
BPA free.  
Keeps drinks hot or cold.  
Double wall insulation.

**360ml**  
100% BPA-FREE

-----  
**SKU:** EVCF3Y202-BK **COLOR:** BLACK  
**SKU:** EVCF3Y202-RD **COLOR:** RED  
**SKU:** EVCF3Y202-WT **COLOR:** WHITE

# HYDRATION



LID



INSULATION PLUG



LID



MOUTH

## X5 INSULATED BOTTLE

STYLISH, DURABLE, CLEAR, SAFE  
Made from 100% leak-proof stainless steel.  
BPA free.  
Keeps drinks hot or cold.  
Double wall insulation.  
Easy to use with one click button cap.

**680ml**

SKU: EVIB3U680-BK COLOR: BLACK  
SKU: EVIB3U680-PK COLOR: PINK



# HYDRATION



## STAINLESS STEEL BOTTLE

ODORLESS, DURABLE, NON TOXIC, ANTI-BACTERIAL, LEAK PROOF COVER.

Double-walled and vacuum-sealed.

Keeps contents hot or cold for hours, does not sweat nor burn your hand.

Contoured design makes the bottle easy to hold.

**750ml**

**SKU:** EVSS9Y101 **COLOR:** Black

**SKU:** EVSS9Y105 **COLOR:** Wooden Blue

**SKU:** EVSS9Y108 **COLOR:** White

# HYDRATION



## STAINLESS STEEL BOTTLE

LARGE CAPACITY: 2.5 LITERS LARGE CAPACITY

Leak-proof

It's a double-walled insulation.

It keeps your drink COLD for up to 24 hours, and HOT for up to 12 hours.

**500ml**  
100% BPA-FREE

SKU: EVSS2U501 COLOR: CLOUDY BLACK

SKU: EVSS2U508 COLOR: PEAKS WHITE

# HYDRATION



TOP

## GRADIENT BOTTLE

STYLISH, DURABLE, CLEAR, SAFE  
Plastic bottle with marker ml capacity  
Hinged top lid, with silicone spout leak proof  
Durable non-slip grip wrist strap  
Quality Tests : BPA FREE

**1000ml**

SKU: EVPB3Y100-BK COLOR: BLACK  
SKU: EVPB3Y100-PK COLOR: PINK



# HYDRATION



TOP

## SUMMIT BOTTLE

STYLISH, DURABLE, CLEAR, SAFE  
Plastic bottle with marker ml capacity  
Flip-top lid, with lock  
Leak proof  
Easy to take on the go  
Quality Tests : BPA FREE

**1300ml**

SKU: EVPB3Y130-BK COLOR: BLACK

# HYDRATION



MOUTH



CAP



SCALE MARK



STRAP

## MOTION BOTTLE

STYLISH, DURABLE, CLEAR, SAFE

Store liquids safely in the -10°C to 96°C temperature range.

Convenient carrying lanyard handle.

Easy to use with single click push button lid.

Quality Tests : LFGB / SGS / BPA FREE

**2300ml**

SKU: EVPB3U230-NA COLOR: NAVY

# HYDRATION



## LARGE WATER BOTTLE MIXING & STORING

LARGE CAPACITY: 2.5 LITERS LARGE CAPACITY

Leak-proof

Does not contain BPA and phthalates.

Comfortable and portable.

Perfect for gym, bodybuilding, camping, travel, sports  
and other outdoor activities.

**2.5LT**  
100% BPA-FREE

SKU: EVJR9Y250 COLOR: GREY / RED



# HYDRATION



**500ml**  
100% BPA-FREE



**600ml**  
100% BPA-FREE

## TRITAN BOTTLE

STYLISH, DURABLE, CLEAR, SAFE

Store liquids safely in the -10°C to 96°C temperature range.

Convenient carrying lanyard handle.

Easy to use with single click push bottom lid.

Quality Tests : LFGB / SGS / BPA FREE

SKU: EVT9U511 COLOR: Black

SKU: EVT9U512 COLOR: Blue

**500ml**  
100% BPA-FREE

SKU: EVT9Y003 COLOR: Navy

SKU: EVT9Y005 COLOR: Red

**600ml**  
100% BPA-FREE

# HYDRATION



## TRITAN BOTTLE

STYLISH, DURABLE, CLEAR, SAFE

**Handle:** Integrated design, more convenient to carry.

**Lid:** Snap-on lid Magnetic adsorption

**TPE Coating:** Cap with TPE coating, streamlining design, skid proof.

**Bottle Body:** Unique concave-convex design, skid proof coating, more convenient to grasp.

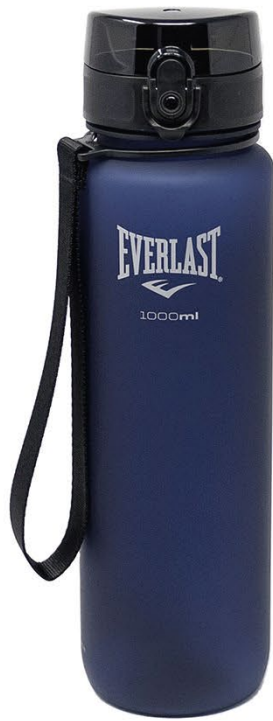
**730ml**  
100% BPA-FREE

.....  
**SKU:** EVPB2U733 **COLOR:** Blue

# HYDRATION



**1500ml**  
100% BPA-FREE



**1000ml**  
100% BPA-FREE



**800ml**  
100% BPA-FREE



## TRITAN BOTTLE

STYLISH, DURABLE, CLEAR, SAFE

Store liquids safely in the -10°C to 96°C temperature range.

Convenient carrying lanyard handle.

Easy to use with single click push bottom lid.

Quality Tests : LFGB / SGS / BPA FREE

**SKU: EVTB2U151 1500ml COLOR: Black**

**SKU: EVTB2U103 1000ml COLOR: Dark Blue**

**SKU: EVTB2U106 1000ml COLOR: Bright Green**

**SKU: EVTB2U801 800ml COLOR: Black**

**SKU: EVTB2U807 800ml COLOR: Purplish Red**





# HYDRATION



## LOCKING CAP

Single-hand Pressing open with safety lock seal



Fast flow



Leak proof



# HYDRATION



## ANGLE BOTTLE

Maintains the temperature of drinks.  
100% FREE BPA

**750 ml**

SKU: EVPB1P751 COLOR: Black



## INSULATED WATER BOTTLE 750ml

### INSULATED TECHNOLOGY

The double-wall construction of our insulated water bottles creates a thermal barrier of air to keep heat out and cold in. Foil layers reflect solar rays for additional thermal protection. This insulated bottle keeps liquid cold twice as long as Conventional bottles. 100 PERCENT BPA-FREE Constructed of low density polyethylene Also keeps warm beverages warm during cool weather rides

**750 ml**

SKU: EVIB1P750 - COLOR: BL

SKU: EVIB1P750 - COLOR: MB

# HYDRATION



## HIBRID SHAKER

STYLISH, DURABLE, SAFE  
Supplement shaker bottle.  
100% Stainless steel shaker bottle.  
Leak proof.  
Keep hot & cold.  
Double wall vacuum insulation.  
BPA FREE.

**850ml**  
100% BPA-FREE

SKU: EVSH3Y850-NA COLOR: NAVY



# HYDRATION



LID



STORAGE

## PERFORM SHAKER

STYLISH, DURABLE, CLEAR, SAFE  
Capacity marker in ml.  
Storage compartment.  
Easy to use with a one click button cap.  
BPA FREE.

**550ml**  
100% BPA-FREE

SKU: EVSH3U550-BK COLOR: BLACK  
SKU: EVSH3U550-GN COLOR: GREEN

# HYDRATION



## 500 SHAKER

STYLISH, DURABLE, CLEAR, SAFE  
Plastic supplement mixer bottle.  
MI ability marker.  
Leak proof lid.  
BPA FREE.

**500ml**

SKU: EVSH3Y500-BK COLOR: BLACK  
SKU: EVSH3Y500-PR COLOR: PURPLE

# HYDRATION



## SHAKER BOTTLE MIXING & STORING

SUITABLE FOR SPORTS, TRAVEL, CAMPING AND HOME USE.  
CAPACITY: 17 OUNCES (500 ML)

Our Shaker is specially designed to mix powdered drinks with ease and without clumps.

Includes storage compartments for nutritional supplements, vitamins, keys, snacks and much more.

Besides creating the perfect shake, it allows you to store and carry what you need in your daily active life.

**500ml**  
100% BPA-FREE

SKU: EVSH9Y500 COLOR: Black / Red



# HYDRATION



## HYDRATION RUNNING BELT WITH 2 BOTTLES 10 OZ

Comfortable and bounce-free runners belt

Fits snugly enough to always stay comfortably in place.

Includes two bottles with push-pull caps for easy access to hydration during your run.

ZIP POCKETS – Front stash pouch for gels, keys etc. Fits 6.5 Inch Smartphones.



-----  
**SKU:** EVHY3W103 **COLOR:** Black / Neon Yellow



2 Bottles with Large Capacity



Gel-based Interior Lining



Night Reflector



Adjustable Belt



## HYDRATION BELT

Running belt with large pocket can hold smartphones, keys, money, cards, and other essentials.

Fully adjustable strap to accommodate your waist.

Running belt with multifunctional pockets.

Zipper pocket to hold smartphones, keys, money, inhaler, and other essentials.



-----  
**SKU:** EVHY3W101 **COLOR:** Black



Breathability



Waterproof



Adjustable Belt

# HYDRATION



## CAMEL BAG 1.5L

Lightweight performance hydration backpack easy bladder loading system breathable shoulder straps, adjustable sternum strap, and cool mesh padded back cyclone hydration reservoir included.

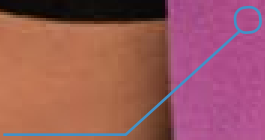
**43cm x 25cm**

SKU: EV1CBB811 COLOR: Black / Grey

**1,5 Litros**



EVERLAST  
E





# FITNESS ACCESSORIES



## MICROFIBER GYM TOWEL

IDEAL FOR GYM WORKOUT, SWIMMING AND TRAVEL.

Super absorbent

Antibacterial - keep your towel fresh and away from mildew & germ.

Ultra compact & light weight - easy to carry.

They can do their job well as travel towels or sports towels.

Also they are ideal for beach, travel, camping, swimming, backpacking, gym.

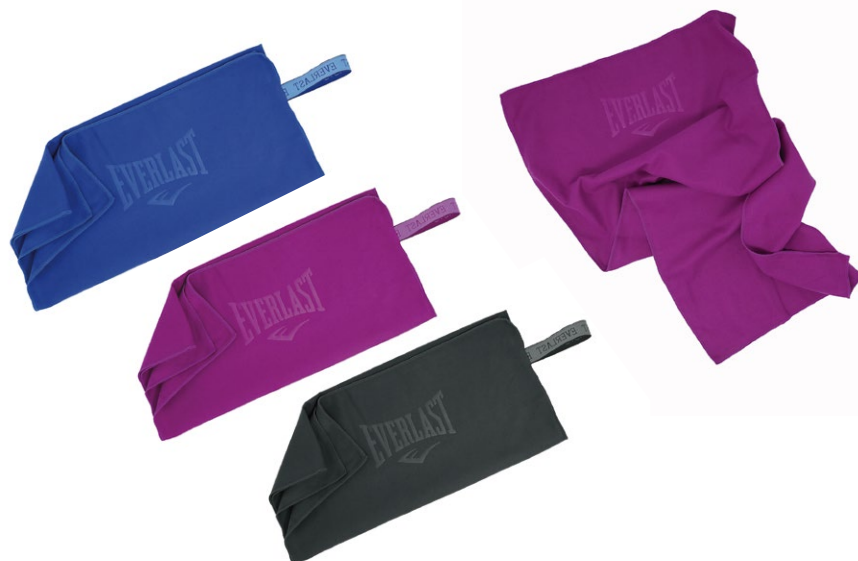
FEATURING  
**EVERDRI™**  
TECHNOLOGY

SKU: EVMT7L112 COLOR: Grey

SKU: EVMT7L113 COLOR: White

SKU: EVMT7L114 COLOR: Navy

**ANTI-BACTERIAL**  
**80 X 40cm**



## MICROFIBER CHAMOIS TOWELS

SUITABLE FOR USE AT: GYM OR FITNESS CLUB, SAUNA OR SPA,  
HOME, HOTEL OR TRAVELLING AND EVERY OUTDOOR ACTIVITY

Microfiber chamois towels, ultra absorbent fabric Quick drying, soaks up water like sponge,  
then wrings out water almost completely dry.

Re-usable mesh pouch ideal for everyday work out.

Super light weight and packable.

FEATURING  
**EVERFRESH™**  
TECHNOLOGY

SKU: EVCT7S171-BL COLOR: Blue

SKU: EVCT7S171-PK COLOR: Pink

SKU: EVCT7S171-GY COLOR: Grey

**ANTI-BACTERIAL**  
**80 X 40cm**

# SCRUNCHES



## SCRUNCHES

---

**SKU:** EVBSC221 **COLOR:** Black

**SKU:** EVBSC226 **COLOR:** Green

**SKU:** EVBSC227 **COLOR:** Red

**SKU:** EVBSC228 **COLOR:** Black / White



# HEADBANDS



## HEADBAND

---

**SKU:** EVBHB221 **COLOR:** Black

**SKU:** EVBHB222 **COLOR:** Charcoal

**SKU:** EVBHB227 **COLOR:** Red

**SKU:** EVBHB229 **COLOR:** Purple







## 4" WRISTBAND

---

**SKU:** EVWB4F401 **COLOR:** Black

**SKU:** EVWB4F403 **COLOR:** Navy

**SKU:** EVWB4F408 **COLOR:** White



## 2" WRISTBAND

---

**SKU:** EVWR6C201 **COLOR:** Black

**SKU:** EVWR6C202 **COLOR:** Navy

**SKU:** EVWR6C203 **COLOR:** Royal Blue

**SKU:** EVWR6C204 **COLOR:** White

**SKU:** EVWR6C205 **COLOR:** Pink

**SKU:** EVWR6C206 **COLOR:** Purple

# HEADBANDS



Perfect For Any Sport  
Lightweight Headband That Keeps Your Sweat And Hair Off Your Eyes  
Breathable Fabric To Keep Your Head Feeling Cool And Dry  
Absorbs Moisture Allowing You To Focus On What You're Doing  
Embroidered Logo



## 1.5" HEADBAND

---

- SKU:** EVHB6C351 **COLOR:** Black
- SKU:** EVHB6C352 **COLOR:** Navy
- SKU:** EVHB6C353 **COLOR:** Royal Blue
- SKU:** EVHB6C354 **COLOR:** White
- SKU:** EVHB6C355 **COLOR:** Pink
- SKU:** EVHB6C356 **COLOR:** Purple

## 2" HEADBAND

---

- SKU:** EVHB6C501 **COLOR:** Black
- SKU:** EVHB6C502 **COLOR:** Navy
- SKU:** EVHB6C503 **COLOR:** White

## 2.5" HEADBAND

---

- SKU:** EVBHB001 **COLOR:**Black
- SKU:** EVBHB025 **COLOR:**Purple

## 1 cm HEADBAND SET

---

- SKU:** EVHB1300 **COLOR:** Black, Lime, Blue, Pink

# FITNESS ACCESSORIES



## FITNESS TRAINING WAIST PACK

6 cm wide 25cm long

Adjustable strap through the releasable buckle to ideal length

Great for sport, running or travelling

Pocket holds small phones, keys, money and other essentials

Comfortable soft elastic prevents chaffing while sturdy

Buckle and glides provide stability for the most active users

.....  
**SKU:** EVWB6I843 **COLOR:** Neon Green

**6 x 25 CM**



## PREMIUM FITNESS WAISTBAG

Made of durable material for a long life.

Main zippered accessory pocket is great for keys, ID, cell phone.

Front pocket for small items.

light and fashionable

The durable belt adjusts to fit most waist sizes.

**20cm x 13cm x 8cm**



.....  
**SKU:** EVWB3WF04 **COLOR:** Gray



## BAG COSMETIC

Perfect organizer, it is lightweight and functional for everything while you travel.

Very useful for keeping all the little things organized.

**23cm x 20cm x 7.5 cm**

.....  
**SKU:** EVPB3N421 **COLOR:** Black



# FITNESS ACCESSORIES



## PHONE HOLDER

SKU: EVAW0900-BK COLOR: Black  
SKU: EVAW0900-PK COLOR: Pink

**ONE SIZE**  
**6.5"**



## REFLECTIVE BAND

Increase your nighttime visibility with these highly reflective bands. They can be seen up to 1,000 feet. That fit on both arms and legs. Easy to put on and unobtrusive, One size fits all.

SKU: EVRFX200-PK  
COLOR: Pink

**3.0 cm wide 30.5cm long**

# COMPRESSION



## +50 UV PROTECTION ARM SLEEVES

ADULTS, UNISEX / UNIVERSAL SIZE  
Uv Protection 50+  
Breathable Fabric With Moisture Control  
Maximum Stretch For Snug Fit  
Gripper Elastic Keeps The Sleeves In Place

**ONE  
PAIR**

SKU: EV1UVS201 COLOR: Black

**SM - LXL**



## CALF COMPRESSION SLEEVES

CALF SUPPORT-SHIN SPLINT RELIEF DECREASED FATIGUE-INCREASED CIRCULATION  
ADULTS, UNISEX / UNIVERSAL SIZE

Improved circulation and faster muscle recovery:  
The compression in each pair of leg sleeves helps to improve venous return, increasing blood flow and circulation.  
This leads to faster muscle recovery time, as muscles receive more of the oxygenated blood they need to recover.  
It is also good for traveling, as it helps to reduce leg swelling.

**ONE  
PAIR**

SKU: EVCL6F001 COLOR: Black  
SKU: EVCL6F002 COLOR: Neon Yellow

**ONE  
SIZE**



EASY TO CARRY ON



# EXERCISE MATS



## HIGH DENSITY NBR

The yoga pilates exercise nbr mat is an excellent mat.

For people on the move, or for studios tight.

On storage space.

Non-slip surface provides stability.

Cushioned for extra comfort.

Suitable for beginners or experts.

Washable - just use soap and water.

---

**SKU:** EVEM115    **COLOR:** Gren    **TAMAÑO:** 1,5 cm

**SKU:** EVEM108    **COLOR:** Beige    **TAMAÑO:** 1 cm

# EXERCISE MATS



## FITNESS MAT YOGA

Designed to provide superior and comfortable foundation for any yoga practice.  
Ultra-lightweight construction.  
Durable, no-slip traction.  
Cushioned for extra comfort.  
Suitable for beginners or experts

- 
- |                     |                           |
|---------------------|---------------------------|
| <b>SKU:</b> EVYM302 | <b>COLOR:</b> Blue Grey   |
| <b>SKU:</b> EVYM303 | <b>COLOR:</b> Blue Legion |
| <b>SKU:</b> EVYM304 | <b>COLOR:</b> Lilac       |



## NBR EXERCISE MAT 15mm DOUBLE CUSHION

The yoga pilates exercise nbr mat is an excellent mat.  
For people on the move, or for studios tight.  
On storage space.  
Non-slip surface provides stability.  
Cushioned for extra comfort.  
Suitable for beginners or experts.  
Washable - just use soap and water.

**173cm X 68cm X 15mm**

- 
- |                     |                        |
|---------------------|------------------------|
| <b>SKU:</b> EVEM111 | <b>COLOR:</b> Blue     |
| <b>SKU:</b> EVEM112 | <b>COLOR:</b> Charcoal |
| <b>SKU:</b> EVEM113 | <b>COLOR:</b> Black    |

# EXERCISE MATS



## EXERCISE MAT

Provides comfort and support for floor exercises and conditioning routines

**100cm x 50cm x 4cm**

**SKU:** EVEM4TS45 **COLOR:** Grey / Black



## HIGH DENSITY NBR 10 mm DOUBLE CUSHION

72" long 24" wide ensures comfort.

10 mm thick high-density foam protects wrists, knees, elbows, head, neck and ankles effectively.

Textured surface stabilizes your body and keeps you from slipping. Sweat resistant feature makes it easy to clean.

Eco - Friendly NBR material is non-toxic and odorless, and it's durable for long lasting use.

Portable and lightweight. Carrying strap is included for easy transport and storage.

Perfect for all types of yoga, pilates and other floor exercises.

Cushioned for extra comfort.

Non-slip surface provides stability.

**SKU:** EVEM010 **COLOR:** Black

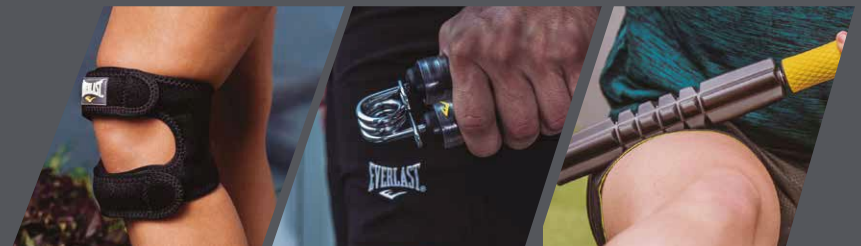
**SKU:** EVEM014 **COLOR:** Blue

**SKU:** EVEM016 **COLOR:** Purple





# TERAPHY & PROTECTOR



# ICE TUBE



## RECOVERY ICE TUBE

The ultimate solution for optimal regeneration after intensive training or competitions.

It allows you to effectively train in cold water to recover your muscles faster.

It can not only be used for ice baths, but also for cold water therapy, hydrotherapy or as a refreshing padding pool for children.

With a height of 75 cm and a diameter of 80 cm, the bath is also well suitable to larger people.

Thanks to the use of high quality materials such as uv resistant pvc and rip-stop nylon fabric, the ice tub is sturdy and durable. It withstands extreme temperatures and offers long-lasting use.

Dimensions: 75cm height and 80cm diameter.

Includes: 1 drainage tube, 1 inflation pump, 1 storage bag, 6 support bars, 1 cover and 1 repair patch, 1 thermometer

---

SKU: EVIT4W100 COLOR: Black

320 L

# MASSAGE & THERAPY



## MASSAGE ROLLER

Excellent for soothing muscle pains, balance exercises, and strength conditioning. Use your own body weight to help increase blood flow and circulation to the soft tissues. Improve springiness, range of motion, minimize pain and soreness.

### FEATURES AND SPECIFICATIONS

Molded polyethylene foam technology and semi-firm surface that will not lose its shape after multiple uses.

**33**  
cm

SKU: EVRL3W330 COLOR: Grey





# MASSAGE & THERAPY



## FOAM ROLLER

Excellent for soothing muscle pains, balance exercises, and strength conditioning. Use your own body weight to help increase blood flow and circulation to the soft tissues. Improve springiness, range of motion, minimize Pain and soreness.

### FEATURES AND SPECIFICATIONS

Molded polyethylene foam technology Smooth and semi-firm surface that will not loose Its shape after multiple uses

**SKU:** EVFR41036 36" **COLOR:** Black

**SKU:** EVFR41024 24" **COLOR:** Black

**SKU:** EVFR41012 12" **COLOR:** Black



## CIRCULAR MASSAGER

Dual textured rolling massage points for arms, forearms, elbows, legs, calves, neck, and other sore or aching areas. 4-Point Massage roller target sore muscles from all four points for instant relief. Foam Roller helps relieve tendinitis including carpal tunnel and tennis elbow.

**SKU:** EVMS3W903 **COLOR:** Black

**4**  
ROLLER  
POINTS



## MASSAGE & THERAPY



### 21" MASSAGE BAR

Soft tissue massage tool designed for faster muscle recovery.  
Release muscle tension and soreness by increasing blood flow.  
Portability for recovery on the go.  
Recover faster.  
Use before and after training.

---

**SKU:** EVMB81779 **COLOR:** Black / Yellow



**RELEASE MUSCLE TENSION  
AND SORENESS BY INCREASING  
BLOOD FLOW.**

# HAND GRIPS



## ADJUSTABLE HAND GRIP

Improve strength and dexterity of your hands, forearms, fingers and wrists with the patented Everlast Adjustable Hand Grip. Ergonomic silicone covered grip handle prevent slippage while high grade plastic shell provides unmatched durability. Easily toggle between two tension ranges with adjustable tension dial. Take one of your workouts on the go with the Everlast Adjustable Hand Grip.

**20-30lbs**  
LOW TENSION

SKU: P00002727 COLOR: Red / Black

- Two tension ranges
- Silicone ergonomic grip handles
- Easy tension dial
- High grade plastic shell



## ADJUSTABLE HAND GRIP

Improve strength and dexterity of your hands, forearms, fingers and wrists with the patented Everlast Adjustable Hand Grip. Ergonomic silicone covered grip handle prevent slippage while high grade plastic shell provides unmatched durability. Easily toggle between two tension ranges with adjustable tension dial. Take one of your workouts on the go with the Everlast Adjustable Hand Grip.

**50-60lbs**  
HIGH TENSION

SKU: P00002728 COLOR: Black



## HAND GRIP DELUXE

**INCREASED GRIP ENDURANCE:** Increasing strength in your hands, fingers, wrists and lower arms will increase endurance, allowing you to perform more repetitions and reach new heights at the gym. It will also enhance your ability to handle weights without the grip giving out.

**NON-SLIP HAND GRIP:** The handles on each side of our hand grip exerciser boast slip-resistant surfaces to ensure you can easily grip and hold with each squeeze.

**1**  
PIECE

SKU: EVHG9W300 COLOR: Black



# HAND GRIPS



## HAND GRIP

**INCREASED GRIP ENDURANCE:** Increasing strength in your hands, fingers, wrists and lower arms.

**NON-SLIP HAND GRIP:** Ergonomic Design with soft Foam Handle fits all hand size for men and women, and providing a maximum comfort grip and anti-slipping.

**20  
KG**

---

**SKU:** EVHG0W020 **COLOR:** Black



**15 KG**



**25 KG**

## SILICONE HAND GRIP

Designed to fortify wrists, fingers and forearms.

Build a more powerful hand grip.

Ideal for strengthening after injury or surgery.

Comfortable, lightweight and compact.

Relieve stress.

---

**SKU:** EVSG2W250 **COLOR:** Black **25 kg**

**SKU:** EVSG2W150 **COLOR:** Blue **15 kg**



## HAND GRIP BALL

Provides resistance exercise for hands,

Wrist, fingers and forearms helps

rehabilitation And improves mobility,

reduces stress.

Prevents stiffness.

Increases flexibility.

Relieves joint pain.

Reduces stress and eases muscle tension.

---

**SKU:** EVGR6R303 **COLOR:** Blue



# NEOPRENE WAISTBAND



## NEOPRENE WAISTBAND

Everlast waistband designed to help you lose weight  
Preserves body heat and promotes water loss during exercise  
High -Quality neoprene construction  
Comfortable and lightweight, easy velcro closure adjustable fit  
It provides extra back support when walking or exercising

SKU: EVFA1S40  
COLOR: Black, Charcoal, Navy

**10"**  
**10x40"**  
**3mm**

## NEOPRENE WAISTBAND

Everlast waistband designed to help you lose weight  
Preserves body heat and promotes water loss during exercise  
High -Quality neoprene construction  
Comfortable and lightweight, easy velcro closure adjustable fit  
It provides extra back support when walking or exercising

SKU: EVFA1S48  
COLOR: Black, Grey, Burgundy

**8"**  
**8x40"**  
**3mm**

# FITNESS ACCESORIES



## CORRECTIVE STRIPS OF BACK POSITION

The adjustable posture corrector helps improve your posture. Made of a light and breathable material. This stand has a discreet and slim design that works under clothing.

-----  
**SKU:** EVBP2W002 **Color:** Black

**SM - ML**





# BELTS



## CORE SUPPORT SLIMMER BELT

FIT 30" TO 44"

- Rigid back provides superior back support
- Emphasizes proper alignment of core muscle
- Eases strain on lower back
- Promotes proper posture
- Slims appearance instantly
- Helps shed excess water

**SKU:** EVDW5S04

**COLOR:** Black

**8.5"x44"**

22 x 112 cms



## CONTOURED SLIMMER BELT

FIT 30" TO 44"

- Reduce your waistband
- Preserve body heat
- Comfortable and lightweight
- Adjustable fit

**SKU:** EVDW5S13

**COLOR:** Grey

**9"x42"**

23 x 107 cms



## NEOPRENE BACK SUPPORT

- System for maximum abdominal and back support
- Encourage correct posture
- Velcro closure for adjustable fit
- This product is designed and anatomically cut to fit the natural contour and shape of your body
- Our construction technology and innovative materials provide the best overall support while feeling comfortable with each movement

**SKU:** EVNBS330

**COLOR:** Black / Grey

**S - M - L - XL**



# NEOPRENE & ELASTIC SUPPORTS



## NEOPRENE WRIST SUPPORT

The Everlast neoprene wrist support is made from high quality neoprene rubber which provides constant uniform compression and support. It also retains warmth which increases blood circulation to injured area therefore promoting natural healing and comfort, in addition the warming effects on muscles and joints increase flexibility to help prevent sporting injuries.

SKU: EVNWS880

COLOR: Grey

**ONE  
SIZE**



## TENNIS ELBOW SUPPORT

Maximum support and stability, compression and heat retention. Comfortable fit. This product is designed and anatomically cut to fit the natural contour and shape of your body. Our construction technology and innovative materials provide the best overall support while feeling comfortable with each movement. Everlast products will minimize the possibility of future injury when being worn during strenuous activities.

SKU: EVTES770

COLOR: Grey

**ONE  
SIZE**



## BASIC NEOPRENE ANKLE SUPPORT

Maximum support and stability, compression and heat retention. Comfortable fit. This product is designed and anatomically cut to fit the natural contour and shape of your body. Our construction technology and innovative materials provide the best overall support while feeling comfortable with each movement. Everlast products will minimize the possibility of future injury when being worn during strenuous activities.

SKU: EVNAS220

COLOR: Grey

**S - M - L - XL**



# NEOPRENE & ELASTIC SUPPORTS



## UNIVERSAL NEOPRENE ANKLE SUPPORT

Maximun support and stability, compression and heat retention  
Comfortable fit  
This product is designed and anatomically cut to fit the natural contour and shape of your body  
Our construction technology and innovative materials provide the best overall support while feeling comfortable with each movement  
Everlast products will minimize the possibility of future injury when being worn during strenuous activities

SKU: EVNAS110  
COLOR: Grey

**ONE  
SIZE**



## NEOPRENE PATELLA STRAP

FULLY ADJUSTABLE PATELLA KNEE STRAP  
ONE SIZES FITS ALL

Maximun support and stability  
Compression and heat retention  
Comfortable fit

This product is designed and anatomically cut to fit the natural contour and shape of your body  
Our construction technology and innovative materials provide the best overall support while feeling comfortable with each movement  
Everlast products will minimize the possibility of future injury when being worn during strenuous activities

This fully adjustable patella tendon knee support helps to ease painful, sore and weak knee joints by providing added compression against the patella tendon

SKU: EVPTS990  
COLOR: Grey, Neon Orange y Neon Yellow

**ONE  
SIZE**



## DUAL STRAP KNEE BRACE

Overlapping two strap closure offers wide range of personalized secure fit and preferred compression support.  
It also helps provide protection from further injury  
Compression tubes provide targeted compression and support.  
Breathable, mesh fabric allows for a comfortable fit

SKU: EVNKS200  
COLOR: Black

**S/M - L /XL**



# NEOPRENE & ELASTIC SUPPORTS



## NEOPRENE BASIC KNEE SUPPORT

Maximum support and stability  
Compression and heat retention  
Comfortable fit

**SKU: EVNKS440**

**COLOR: Grey**

**S - M - L - XL**



## NEOPRENE DELUXE KNEE SUPPORT

Hinged knee stabilizer  
Maximum support and stability  
Compression and heat retention  
Comfortable fit

**SKU: EVNKS660**

**COLOR: Grey**

**S - M - L - XL**



## NEOPRENE REINFORCED KNEE SUPPORT

Hinged knee stabilizer  
Maximum support and stability  
Compression and heat retention  
Comfortable fit

**SKU: EVNKS550**

**COLOR: Grey**

**S - M - L - XL**



# NEOPRENE & ELASTIC SUPPORTS



## UNIVERSAL KNEE BRACE

Anatomical contoured design provides optimal fit and compression support throughout full range of motion.  
Air flow neoprene provides moisture wicking compression for therapeutic warmth and healing.  
Compression padding provides targeted compression and support, relieve pain from runner's or jumper's knee.  
3 strap closure offers wide range of personalized secure fit and preferred compression support.

SKU: EVNKU770  
COLOR: Black

**ONE  
SIZE**  
28 - 44 cm



## ELASTIC WRIST SUPPORT

SUPPORT AND STABILITY  
COMPRESSION AND HEAT RETENTION  
COMFORTABLE FIT  
This product is designed and anatomically cut to fit the natural contour and shape of your body  
Our construction technology and innovative materials provide the best overall support while feeling comfortable with each movement  
Everlast products will minimize the possibility of future injury when being worn during strenuous activities

SKU: EVEW160  
COLOR: Black

**ONE  
SIZE**



## ELASTIC ELBOW SUPPORT

SUPPORT AND STABILITY  
COMPRESSION AND HEAT RETENTION  
COMFORTABLE FIT  
This product is designed and anatomically cut to fit the natural contour and shape of your body  
Our construction technology and innovative materials provide the best overall support while feeling comfortable with each movement  
Everlast products will minimize the possibility of future injury when being worn during strenuous activities

SKU: EVEE641  
COLOR: Natural

SKU: EVEE164  
COLOR: Black

S - M - L - XL



# ELASTIC SUPPORTS



## ELASTIC THIGHBAND SUPPORT

SUPPORT AND STABILITY  
COMPRESSION AND HEAT RETENTION  
COMFORTABLE FIT

This product is designed and anatomically cut to fit the natural contour and shape of your body  
Our construction technology and innovative materials provide the best overall support while feeling comfortable with each movement  
Everlast products will minimize the possibility of future injury when being worn during strenuous activities

**SKU: EVETS800**

**COLOR: Black**

**S - M - L - XL**



## ELASTIC KNEE SUPPORT

SUPPORT AND STABILITY  
COMPRESSION AND HEAT RETENTION  
COMFORTABLE FIT

This product is designed and anatomically cut to fit the natural contour and shape of your body  
Our construction technology and innovative materials provide the best overall support while feeling comfortable with each movement  
Everlast products will minimize the possibility of future injury when being worn during strenuous activities

**SKU: EVEK161**

**COLOR: Black**

**SKU: EVEK162**

**COLOR: Natural**

**S - M - L - XL**



## ELASTIC ANKLE SUPPORT

SUPPORT AND STABILITY  
COMPRESSION AND HEAT RETENTION  
COMFORTABLE FIT

This product is designed and anatomically cut to fit the natural contour and shape of your body  
Our construction technology and innovative materials provide the best overall support while feeling comfortable with each movement  
Everlast products will minimize the possibility of future injury when being worn during strenuous activities

**SKU: EVEA161**

**COLOR: Black**

**SKU: EVEA168**

**COLOR: Natural**

**S - M - L - XL**



# BANDAGE



## THERAPEUTIC BANDAGE

Multipurpose elastic compression bandage for first aiders. Helps stabilize and reduce pain, as well as the pain of a sprain. It can also help secure a splint after a fracture or sprain.

---

**SKU: EVEB4W831**  
**COLOR:** Black  
**SKU: EVEB4W832**  
**COLOR:** Blue



## ATHLETIC WRAP

Self adhesive design: these elastic bandages are far better than the non-adhesive one as they have self-adhering ability so that the tape doesn't loosen and fall off easily. Great therapeutic value: our tapes are sterile and they have great medicinal value, which is good for swelling, sprain and general soreness

---

**SKU: EVAT6I101**  
**COLOR:** Black  
**SKU: EVAT6I102**  
**COLOR:** Blue  
**SKU: EVAT6I103**  
**COLOR:** Red

**SKU: EVAT6I104**  
**COLOR:** Neon Green  
**SKU: EVAT6I105**  
**COLOR:** White

**75 mm**  
**x 2m**



# FITNESS ACCESSORIES



PARA MAYOR INFORMACIÓN COMUNÍQUESE  
CON SU EJECUTIVO DE VENTAS

DEPORTES JIMMY CR S.A  
AN AUTHORIZED LICENSEE OF EVERLAST WORLDWIDE INC,  
Ofibodegas Capri, Bodega #20, de Multiplaza Escazú, 1 km al norte,  
contiguo al Colegio Blue Valley. Guachipelín.  
San José, Costa Rica

T: (506) 2215-1578 / 2215 1745

C: [ventascr@djimmy.net](mailto:ventascr@djimmy.net)

[WWW.EVERLASTLATAM.COM](http://WWW.EVERLASTLATAM.COM)



@EVERLAST.CR  
@EVERLASTLATINO



@EVERLASTLATAM